

News

The Newsletter of Old Woughton Parish Council



MKDons on the training pitches at Woughton (Page 3)

Who's Who in the Parish

OLD WUGHTON PARISH COUNCIL

The Parish of Old Woughton is divided into 4 parish wards.
Details of your local Councillors are listed below.

Woughton on the Green North



Rob Grindley
Planning, Transport,
Liaison for MK Dons
Community Trust
rgrindley@
oldwoughton.org.uk



Ryan Gillies
Canal & River Trust, OWIS/IT,
Allotments, Speedwatch
rgillies@oldwoughton.org.uk



Phil Nash
Allotments,
Communications, OWIS/IT,
Speedwatch
pnash@
oldwoughton.org.uk

Woughton on the Green South



Ray Brown
Allotments, Planning,
Finance
rbrown@oldwoughton.org.uk



Charlotte Hall
CHAIR
Communications, Finance & Budget,
Planning, Transport, Liaison for Parks Trust,
MK Dons Community Trust, Parish Forum
chall@oldwoughton.org.uk

Woughton Park



**Vanessa
Freeman Gwynn**
VICE CHAIR
Liaison for MKCC and Parks Trust,
Communications, Planning
vgwynn@oldwoughton.org.uk



VACANT

Passmore



Mary Major
Liaison for Parishes Forum,
Finance & Budget
mmajor@oldwoughton.org.uk



VACANT

The Borough of Milton Keynes is divided into larger city wards, OWPC is in the Ouzel Valley Ward.
Your ward councillors are :

Clerk and RFO



Katherine Harmsworth
kharmsworth@oldwoughton.org.uk



Uroy Clarke
Uroy.Clarke@
milton-keynes.gov.uk
T. 07737 803138



Jenni Ferrans
jenni.ferrans@
milton-keynes.gov.uk
T. 07775 926993



**Macsene
Isles-Ahite**
Macsene.Isles-Ahite@
milton-keynes.gov.uk
T. 07775 617806



**Our Next Parish Council
Meetings Are On Monday:**

13th July, 14th September
9th November
at 7.30pm

VENUE: St. Mary's Church

CONTACT US

<https://oldwoughton.org.uk>

01908 465811

clerk@oldwoughton.org.uk

OWPC, PO Box 6548,
Milton Keynes, MK10 1AB



Friends of
Old Woughton PC

Editorial

Welcome to the summer issue, although unusually for the UK, it feels as though it's actually been summer for some time!

As we reviewed the articles coming in, we realised that there is a clear theme of 'infrastructure' in play. Perhaps this is inevitable when we lie so close to the centre of an UK success story, but whether it's the Grand Union Canal transfer; the East West Rail investment proposals; MKCC's Transport Plan 5 consultations – go on the Noise Group! – this parish is being directly affected (pp 4/5 refer).

Fantastically for us, however, we live in an area where we can access all those investments whilst, at the same time, enjoying the Chair calling for more 'bat intel' – love that (p6), and us having the opportunity to share in a 150th year anniversary of the old village school (p8). Meanwhile, on p6, we have a Parks Trust update on its works at Walton Lake – dog-walkers we hear you!

This richness on our doorstep only thrives because of your participation in Old Woughton's activities. So whether you came along to the Annual Residents' Meeting on June 16th and/or are coming along to an event in the Community Orchard's 50th season, or ran in the marathon, for charity, (p7) please do feedback to us – we're happy to include any parishioner's material in future issues.

Charlotte, Phil & Vanessa

The Comms. Team

MK Dons Promoted!

Few, if any, of our readers will be unaware that the MK Dons have been promoted from League 2.

A significant component to their season has been the re-laying of the training pitches at Woughton on the Green playing fields and our cover picture shows some of the players training there.



Residents Meeting June 2026

OLD WOUGHTON PARISH COUNCIL

The Chair

Trains, Planes and automobiles! Well not exactly, but...

Whilst boundaries have very much been our pre-occupation over the last year or so, we now arrive at a collection of topics that can be neatly boxed under the heading of 'infrastructure'. Replace air (planes) with water (canals and lakes) and we address the current issues that are relevant to our residents at this time. As a parish council we continue to engage and represent our parish through submissions on a wide range of Consultations and in this edition we share those and update you on ones already in progress (see pages 4 and 5).

On a more operational level we have attended drop-in sessions with Highways Officers and engaged with our partners and external agencies to discuss road maintenance and safety, parking strategies, waterways and lake management, E-Scooters and Bikes and more! We continue to work closely with our neighbouring Parish Councils which ensures a coherent 'voice' on the ground. Again, in this edition we share updates on these topics local to us and the work of the parish council.

It was very good to see you all at the recent Residents Meeting and hear about the MK University Hospital's programme and development, work in our wonderful orchards and an update on proposals in the Canal Transfer project. I would like to thank our speakers for a most informative occasion.

It has to be said, that there is a lot going on and so we continue to strive to share and signpost as much helpful information as we can, and we very much welcome your ideas, thoughts and feedback via Clerk@oldwoughton.org.uk.

Charlotte

The Chair who is just a bit batty about bats! (page 6)

Infrastructure around the parish...

East West Rail Consultation 2026 Feedback submitted by OWPC

Question 10

Marston Vale Line level crossing proposal - Fenny Stratford (Simpson Road).

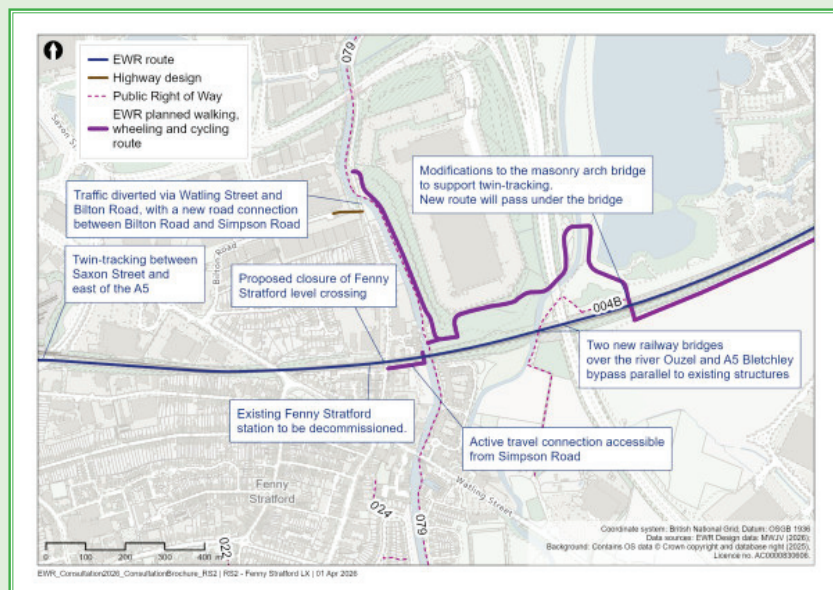
We note that diverting traffic from Simpson Road onto Bilton Road would require the purchase of private land to create the proposed new junction just south of the canal bridge.

Because the canal bridge only allows single file traffic, the new junction would need a three way traffic light system. The bridge also has weight restrictions and creating a new access point into Bilton Road risks encouraging heavy goods vehicles to use the bridge, despite its structural limitations.

The stated justification for closing the Fenny Stratford level crossing is the increased waiting time for drivers due to more frequent and longer trains. However, it is unclear whether these additional delays alone justify the scale, complexity, and cost of the proposed works required to close the crossing.

The diversion would also redirect traffic away from Fenny Stratford High Street, breaking a long established and efficient route to local shops and restaurants. This is likely to have a negative impact on local businesses.

In summary, the proposals appear unnecessarily complex in response to what is essentially an increase in waiting time at the level crossing. **Our view is that the level crossing should therefore be retained.**



Pot Holes and Road Defects

OWPC is often asked how pot holes and road defects are assessed and prioritised for repair by MKCC and so share here links to some helpful Information available on the MKCC website.

'All potholes reported to us are inspected by our qualified Highways Inspectors. If you want to know more about the inspections process, have a look at our Mini Guide on Highways Inspections on our website (<https://www.milton-keynes.gov.uk/highways/roadworks-and-road-maintenance>)

We decide if a pothole will be repaired based on the criteria in our Codes of Practice introduced in October 2018. The Code of Practice was commissioned by the Department of Transport to provide guidance for local highways authorities.

Assessments are carried out on a risk-based scale 1 Very Low to 5 Very High and determine when a repair should be carried out. Highways officers will mark out works areas so crews know exactly where they will need to cut at time of repair.

If a road closure is required to do the works, a highways permit will need to be submitted and approved. All approved permits are listed on <https://one.network> where you can see where and when highways works will be taking place'

MKCC Road Surface Defects Mini Guide 2024/2025; Highways Safety Inspections Mini Guide



Grand Union Canal Water Transfer proposals: Phase Two

As we were about to go to press, Sarah-Jane O'Kane, from Grand Union Canal Transfer was addressing the Annual Residents Meeting on 16th. June about local responses to representations made during the Phase Two consultations (OWPC response reported on p.7 of the Spring Newsletter).

In breaking news, it was said that the proposed works to Bridge 88 (Peartree Bridge) now looked likely to be unnecessary (ie no site compound would be required on the Green – or anywhere else).

We'll probably never know whether it was OWPC's representations that led to the changed approach but, hey, you have to be in it to win it, right?

TRANSPORT PLAN 5 Response to MKCC consultation

Old Woughton P. C. is supportive of the strategy, but makes the following comments:

- The report seems to dismiss the prospect of a city-wide reduction in speed limits. However, could we request this is considered in more detail. A simple 10 mph reduction from 70 to 60 mph for main 4 lane grid roads and 40 for all other grid roads would appear to be workable.
- The advantages could include a reduction in road noise, an issue overlooked in the consultation, and a reduction in high-speed accidents, all with minimal delay to overall journey times.
- A reduction in speed could reduce the need for the physical changes to the road network that are proposed in the document. Removing the ability to turn across grid roads and force drivers to extend the journey to the next roundabout is inefficient and will be costly to implement.
- It also adds to congestion at roundabouts and in turn increases the likelihood that traffic lights will be needed, which again should be avoided if at all possible.

Returning to road noise, can we request information on 'quiet tarmac' and whether the road surface can be mandated to meet specific acoustic requirements. Is there any evidence or strategies used in other parts of the county that we can refer to?

We very much support improving public transport and the cycle Redway network. Also, can there be further consideration given to how access, parking and traffic management will be taken into account with open green spaces and leisure facilities, which for our Parish is a matter of concern for residents. We already see overflow parking onto minor roads and residential areas along the Ouzel Valley green corridor.

We look forward to participating further as the strategy develops. Thank you.

Village Parking Matters

In response to concerns raised by residents, Woughton on the Green South councillors have carried out a survey in The Close and Bowles Place with regards to parking issues on MKCC Highways spaces local to these homes.

19 survey forms were distributed and 9 returned (a 47% return rate), of which the majority were not in favour of either a Resident Parking Permit Scheme or marked parking bays.

Respondents were supportive of:

- 1) Looking at the options of signage in some form
- 2) More information on events/event management
- 3) Continued communication with partner bodies and information-sharing

Next Steps: to explore these three proposals and determine some practical outcomes where possible. Thank you to all of the residents who took part.

The best way for all parishioners to keep across local events is to sign up for OWPC's Notification service, email communications@oldwoughton.org.uk to subscribe



Mandatory Parking Zones for E Scooters – A Work in Progress

As highlighted in our previous newsletter, Lime and Dott e scooters and e bikes must now be left in designated mandatory parking zones rather than being parked freely. Each zone is centred on a specific GPS "pin", with a set radius around it where riders are permitted to finish their journey.

The size of these pins varies from location to location. This is largely due to local conditions, including the occasional issue of "GPS drift". Although Lime and Dott use industry grade GPS, the technology is not perfect and can sometimes record a scooter or bike as being a few metres away from its true position. To avoid unfair fines for riders who have parked correctly, the operators must build in a tolerance that accounts for this drift.

Over recent months, the Parish Council has been working with Lime and Dott to improve the placement and usability of these parking zones. We have:

- Flagged locations where the current pin simply doesn't work
- Suggested alternative, more suitable sites
- Requested tighter parking pins where local conditions allow
- Provided photographs in areas affected by GPS drift, helping riders understand exactly where they should leave their vehicles

This is an ongoing process, and your feedback continues to be invaluable.

If you have comments or concerns about the e scooters or e bikes, you can contact the operators directly:

- Lime: help-miltonkeynes@li.me
- Dott: mk-ops@ridedott.com

Alternatively, you can share your feedback with the Parish Council at clerk@oldwoughton.org.uk.



The Great British Spring Clean 2026

In March, Keep Britain Tidy organised its annual spring clean.



Here in Old Woughton there were organised litter picks and other ad hoc collections by residents as part of the national event. 16 bags of litter were collected. The volume of litter that our regular litter picks encounter is very disappointing. The Keep Britain Tidy strap line "Love where you live" seems very appropriate. If you would like to join future litter picks please make sure you are on our volunteers email list by contacting us at communications@oldwoughton.org.uk.



Walton Lake – an update from MK Parks Trust

'Just to update you: we are suffering considerable antisocial behaviour at Walton Lake boardwalk and due to its condition now we have taken the decision to close it until we are able to install a new accessible bridge across to the peninsular wood. This work is currently in the planning stage, and we will be applying for funding in the coming months. We will be carrying out tree clearance and de silting of the reedbed link in the autumn in advance of planned construction next spring. We will put fencing at both access points to the boardwalk/reedbed area and the removal of the boardwalk will take place over the summer'

Barry Goodman, Area Landscape Manager, MKPT



All things BATS!

In 2020 OPWC bought 6 bat boxes and with the advice and support of the Parks Trust, the boxes were secured on trees in the 'Water gardens'/Paddocks area and on the perimeter of an ancient pond in the Ouzel Valley parklands.

Boxes take time to be inhabited by bat colonies and in the first few years can be 'rented out' by birds and other opportune wildlife! So, after recent consultation with the Parks Trust's Nature Conservation Officer Carla Boswell we plan to revisit our boxes and determine if they are being used by bats and address any maintenance matters. Carla is licenced for this type of work as of course bats are highly protected by law.

In June/July female bats give birth to a single 'pup' and gather in maternity colonies/roosts. By August the young bats will be weaned and start to fly, feed on insects and become more independent. Throughout these months the female bats need to feed constantly and you will see them busy on a warm night, swooping to enjoy an insect or two!

I know many of you have bat colonies that roost in your homes and it would be very interesting to see how widespread this is, and indeed observations of 'bat activity' around our landscapes. We may also, work with the Parks Trust to see if we have more rare species in our parish, some of whom will enjoy the old redundant chimneys in the old village setting/buildings.

We plan to have a small working party, later in the summer, led by Carla so if you are interested in joining this session, and other possible monitoring sessions please can you contact me directly: chall@oldwoughton.org.uk

Please use this address also for any bat 'intel' and sharing of your experiences on this topic.

Charlotte

Batty about bats!



Intelligence gathering and the Alert database

Dear Neighbourhood Watch and Police Alert member

Intelligence gathering

I thought it useful to do a reminder for you to register if you have domestic CCTV (including video door-bells and/or dashcams) at your home.



There's a facility in the Alert database where you can tick if you have CCTV surveillance. This information is a great tool for the Police intelligence gathering: not only can they send you an email message on local crime, incidents, appeals, etc. (don't forget, you can click to reply to or rate the message) BUT ALSO they can see if you have registered CCTV and get back in touch with you for any suitable footage that might help their investigations.

I'm writing this as six Neighbourhood Watch volunteers and two Police officers were out and about leafleting crime prevention and engaging with the public in the Abbey Hill Parish yesterday, on a project supported by the Parish Council. Picked a nice day for it too!

I was amazed by how many houses had a video door bell.

To register your CCTV, log into www.ourwatch.org.uk or <https://www.thamesvalleyalert.co.uk/> – whichever website you initially registered with – and check out the header: Interests or Surveillance/CCTV.

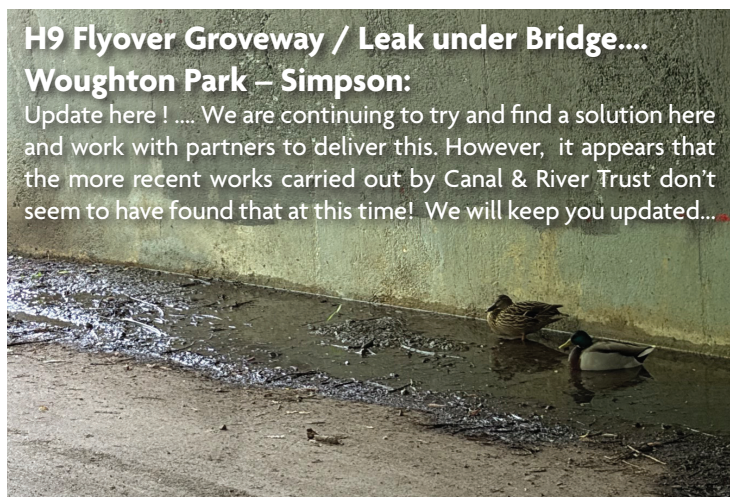
And do please consider setting up a Watch scheme, if there isn't one in your road. You can apply to do this on the website by naming and mapping your road or area. Leading a scheme is not a lot of work to do as it is mainly online nowadays AND we have all the **FREE** street-signs, branded stickers, leaflets required.

The Police tell us crime is lower in Neighbourhood Watch areas: about 15%-20% lower! So why not set up a scheme for a safer community where you live.

Message Sent By

Nick King

(NWN, MSA, Thames Valley)



MK Marathon 2026

There were particularly large numbers of runners this year in the Marathon, Marathon Relay and Half Marathon, which all passed through Woughton on the Green following the now usual route. This is part of a trend in recent years. One addition to their numbers was Alex Wilson of Passmore running in his first marathon, see photo.



Alex Wilson, 3088, running his first marathon

The signage went up earlier than in previous years and the 'clean-up' was carried out quickly and efficiently.

The men's winning time this year was 2 hours 25 minutes and 36 seconds with the women's race being won in a time of 2 hours 51 minutes and 32 seconds – both were course records. The marathon relay was won in a time of 2 hours 46 minutes and 53 seconds by an all male team. The half marathon was won in a time of 1 hour 8 minutes and 16 seconds for the men, also a course record, and 1 hour 22 minutes and 33 seconds for the women. If you wish to see the full race results they can be found at <https://results.resultsbase.net/Results.aspx?Cid=8&Rid=20781>.

The usual location for the water station and toilets on the Green was in place this year. The post-race clean-up was conducted quickly and efficiently.

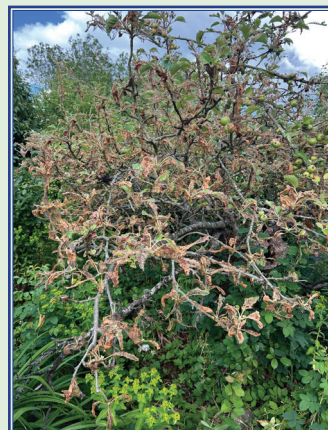
What is going on with our fruit trees ..?

As we enjoy and celebrate our 'Golden Anniversary' of our local orchards and fruit trees locally we provide some information here with regards to the 'eerie' and quite dramatic outwardly state of many of our fruit trees and orchards that you observe at this time...

The answer: Ermine Moth!.....

Over Winter the larvae of this moth are situated local to the fruit tree trunks and in Spring travel to the canopy and take hold as Caterpillars which will be viewed in 'nest like' clumps- munching on the leaves of the trees.

Whilst outwardly impactful – this cycle will not destroy the fruit of the trees.



ARE YOU A PRIORITY?

Given that there are more heatwaves in the forecasts, and that water outages across the UK have been in the news – including locally in the Brickhills and parts of Woburn Sands - Anglian Water has re-issued its Priority Registration details for vulnerable households. So, if your circumstances meet the criteria you are encouraged to explore inclusion by going online at: <https://www.anglianwater.co.uk/help-and-advice/water-care/priority-services/sign-up-for-priority-services> or by ringing: 03457 919 155 :

- If you're going through life changes
- If you need to use vital medical equipment
- If you're an expectant mother, or have a baby under 12 months old
- If you're deaf, hard of hearing or have a sight or speech impairment
- If you have restricted mobility or a disability
- If you have a serious or long-term illness
- If you need mental health support
- If you're caring for a loved one



UK City of Culture 2029

Our city has been longlisted for a once-in-a-generation opportunity that could bring £10 million to MK...so we want to hear from you. Whether you're a resident, creative, community group, or local business, your ideas, experiences, and stories will help shape a vision that reflects everything that makes Milton Keynes unique – its creativity, diversity and ambition.

There are lots of ways you can get involved. Over the next month, we'll be hosting workshops and pop-up sessions across the city where you can share your ideas, family stories, and what Milton Keynes means to you. We'll also be creating a Book of Ideas to capture what makes our city special, alongside creative activities for all ages, including collage-making and school projects. You can find out what's happening, where and when on the new Destination Milton Keynes (DMK) website (**MKCC press release June 2026**)



If you would like to view an electronic copy of the newsletter just scan the code

Advice Sessions

For residents of Simpson, Ashland and Old Woughton



Citizens Advice Milton Keynes is working with both Simpson & Ashland and Old Woughton Parish Councils to provide advice surgeries for local residents.

Our advice is free, impartial and **confidential**.

See below for details of when and where we'll be in the area:



17th Apr 2026: St Mary's Church
10th Jul 2026: Ashland Lakeside

10am - 1pm
11am - 2pm

We can advise you on a range of problems including:



- Debt and Money Issues
- Benefits and Universal Credit
- Housing and Homelessness
- Work and Employment
- Family Law
- Immigration
- Consumer Problems

citizens advice Milton Keynes

EVENT CALENDAR

July 3
Litter Pick
2pm
Passmore
(meet by the noticeboard)

July 10
Citizens Advice Session (free)
11-2pm
Ashland Lakeside

July 18
Litter Pick
10.30-11.30am
WoTGN
(meet at paddocks car park off Newport Road)

July 25
Golden Summer Picnic
1.30-4pm
Orchard

August 1
Litter Pick
10.30-11.30am
WoTGS
(meet on seat opposite the pub)

August 30
Parks & Ride
11am
meet at the Pavilion

September 9
Accessible Inclusive Stroll
10.30am
Ashland Lakeside

September 12
Woughton Heritage
St. Mary's Church

October 2
Litter Pick
2pm
Passmore
(meet by the noticeboard)

October 17
Golden Jubilee Apple Day
12pm-4pm
Orchard

October 9
Citizens Advice Session (free)
10-1pm
St. Mary's Church

Old Woughton News is produced by
t: 01480 474787 e: sales@xlpress.co.uk
w: www.xlpress.co.uk

