

# { SMALL is BEAUTIFUL }



## **Proposal for independent parish status for Woughton On The Green, Woughton Park and Passmore By the residents of Polling District MD – May 2011**

## The voice of the residents

*"I support strongly the proposal that Passmore should separate from the existing parish and we, together with Woughton on The Green and Woughton Park, should form a new parish."*

*"We agree it is time for a new Parish Council and your suggestion of aligning with the Polling District is very logical and sensible. We fully support the campaign."*

*"Exactly as stated so well in the letter received with this form."*

*"Fantastic Idea."*

*"In favour of a smaller parish."*

*"Great idea! When can it start! Home rule for Woughton Park homes – at last!"*

*"We/I totally agree with the sentiments expressed in the letter and find the argument about aligning to various tiers of government very compelling."*

**Over 90% of respondents voted for change**

*"Small is beautiful."*

*"I fully support item 1 above, and strongly believe in a small separate parish council that will improve the control, costs and decision making in the parish."*

*"I fully support the campaign for a new small Parish Council that brings together Passmore, Woughton on The Green and Woughton Park."*

*"A smaller Parish Council which can really represent residents will give us a community identity and encourage participation in local issues."*

**More than three quarters of the occupied homes responded**

*"All the rationale already outlined"*

*"Our three areas are already recognised by MK Council as Polling District MD, so it would seem natural that we should be an independent parish in our own right."*

*"A smaller, more "local" parish council would be better placed to represent the interests of people in this area, and to target resources in a more relevant way."*

*"I want a strong Parish Council that reflects a sense of pride and purpose, relevant to my aspirations for the area I live in."*

*"Our services could be provided quickly and efficiently – people would then become more interested in what's happening in their Parish Council."*

## Table of contents

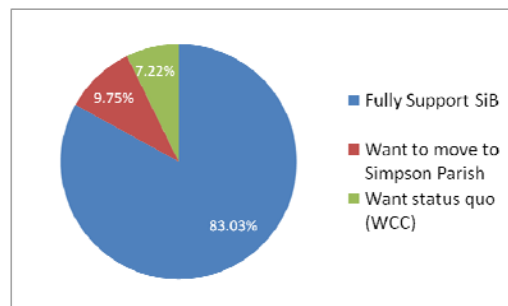
The voice of the residents.....	2
Table of contents .....	3
1. Summary.....	4
2. The proposal for a new parish.....	5
Figure 1: A map showing the proposed new parish.....	5
3. The campaign .....	7
4. Postal survey of residents – completed September 2010.....	8
4.1 Statistical Results. ....	8
Figure 2: Graphical analysis of survey returns – 50.5% of occupied households.....	8
Figure 3: Graphical analysis of survey returns by council tax banding and area.....	8
4.2 Descriptive Results.....	8
Figure 4: Survey comments by topic .....	9
4.2.1 “Small is Beautiful” (44): .....	9
4.2.2 “Democracy” (37): .....	9
4.2.3 “Community” (37): .....	10
4.2.4 “Services” (27):.....	10
4.2.5 “Opposed” (1): .....	10
4.2.6 “Development” (15): .....	10
4.2.7 “Join Simpson & Ashland” (8):.....	11
4.2.8 “No Need for Change” (7):.....	11
4.2.9 “Heritage” (5): .....	11
5. Doorstep survey of residents – April/May 2011 .....	12
Figure 5: Summary of the door to door survey in Spring 2011 .....	12
Figure 6: Summary of the combined survey results .....	13
Figure 7: Support by council tax band .....	13
6. Residents meeting 12 <sup>th</sup> April 2011 .....	14
7. What might the new parish look like?.....	15
7.1 Assets.....	15
7.2 Demographics. ....	15
7.3 Potential responsibilities. ....	15
7.4 Would the new parish be financially viable?.....	16
Figure 8: Provisional precept scoping estimates .....	16
8. Latest developments.....	17
8.1 The ‘Join with Simpson and Ashland’ Campaign .....	17
8.2 The Tinkers Bridge Campaign.....	17
8.3 Peartree Bridge .....	17
Appendix 1: Buildings, assets and services within the area .....	18
Appendix 2: The research approach.....	20
Primary research .....	20
Secondary research .....	20
Appendix 3: Demographics for Polling District MD .....	21
Table 1: Population.....	21
Table 2 – Dwellings .....	21
Table 3 - Council Tax.....	22
Table 4 – Electoral Roll Analysis .....	22
Appendix 4: Precept Data .....	23
Appendix 4: Precept Data .....	23
Table 5 – Borough Wide Precept Data 2011-12.....	23
Appendix 5: Campaign Newsletters.....	24
Appendix 6: Full Database of Survey Respondents’ Comments .....	25

## 1. Summary

This proposal is presented by a small working group drawn from the three areas of Woughton On The Green, Woughton Park and Passmore on behalf of the residents.

It seeks the Council's approval for this area to form an independent Parish. This new parish would be of similar size and demographics to several other Milton Keynes parishes, such as Loughton, North Crawley and Simpson & Ashland.

There is written support from 58% of the homes in the campaign area: rising to 83% when 'non respondents' (inc. unoccupied properties) and 'uninterested parties' are excluded. Those in favour of the 'status quo', remaining as part of Woughton Community Council (WCC), represent only 7.25% of homes expressing an opinion.



The research endorses the headline numbers that emerged from the consultation that Milton Keynes Council's (MKC) Democratic Services reported to the Parish Boundary Review Group on 17<sup>th</sup> March 2010.

This proposal describes the collective views of the many residents who readily responded to the group's initial campaign letter and questionnaire, which was sent to all households in the area in 2010. The campaign team continues to engage with residents in the area on a regular basis and, if anything, support has steadily grown.

The creation of a new parish will deliver the following:

- Clear accountability to both residents and MKC;
- A focus on developing the immediate local environment in a sustainable way;
- Preservation and support of the balanced diversity of the area;
- Concentration of increased support on older and more vulnerable residents;
- A controlled financial management approach in line with the clearly expressed wishes of its residents;
- Strengthening of democracy in the areas concerned and increasing local participation;
- A clear-minded, self-reliant parish that would be an asset to Milton Keynes.

Over the last year the campaign has already developed and grown the strong sense of community and alignment in the campaign area. The conclusions that can be drawn from the campaign's extensive consultation exercises are that residents want change and support for that change comes from a diversity of households.

The overwhelming majority of the residents of the Small is Beautiful campaign area, request that the Council approves this proposal for independent parish status.

The Small is Beautiful Campaign Team  
May 2011



## 2. The proposal for a new parish

This campaign exists to create a new small Parish Council that brings together Woughton On The Green, Woughton Park and Passmore. Collectively, the boundaries are already recognised by MKC as 'Polling District MD' and by WCC as the Woughton Park ward. The boundaries of the proposed parish are thus currently treated consistently, for all four tiers of democratic representation to elect:

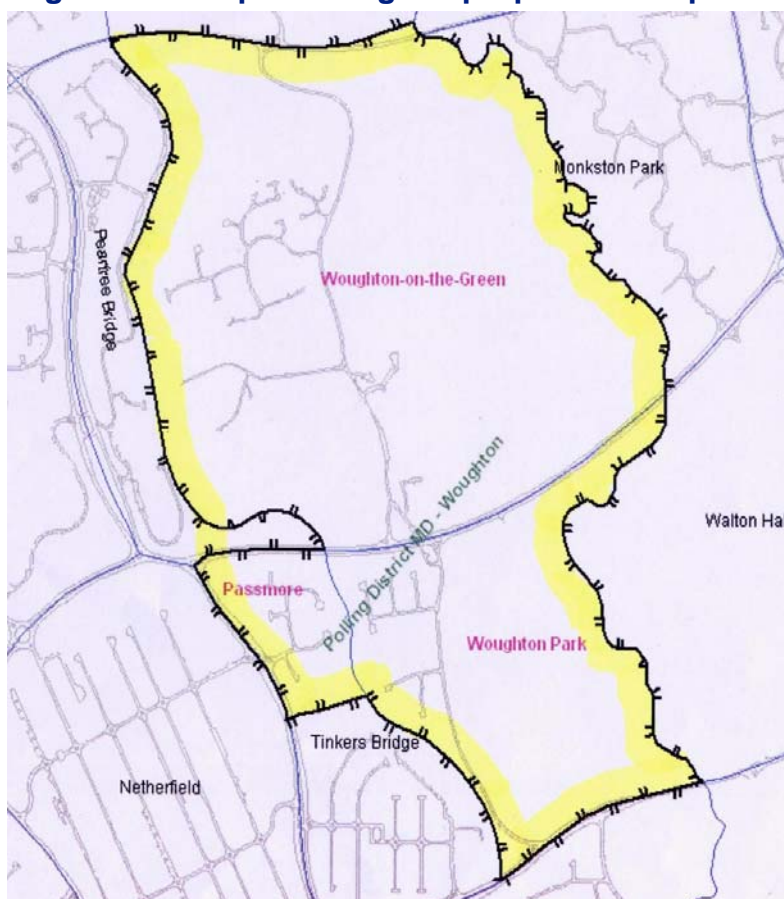
- The Member of Parliament in the House of Commons;
- The MEP in Brussels;
- The two borough councillors who serve on MKC;
- The two parish councillors who serve on WCC.

*"Many residents want to work together to create a future that benefits us all."*

This consistent treatment clearly demonstrates the validity of the boundaries, which are accepted at European, national and local levels.

This is a community with a distinct culture and growing sense of togetherness. The area centres on an historic church, a village green and pub. Its character is predominantly rural, village, pasture and water parkland.

**Figure 1: A map showing the proposed new parish**



It has been asked why this campaign is only focusing on Woughton On The Green, Woughton Park and Passmore.

It is essential to keep in mind that a Parish is not only defined by obvious boundaries but by the synergies between the residents. The words 'Small is Beautiful' has been

adopted by the local residents because it exemplifies their feelings, desires and strong belief that they are a community. The area encompasses a cohesive group of like-minded people, brought together by their views and needs, irrespective of geographical boundaries.

The proposed new, small Parish Council would give residents greater influence over decisions affecting their locality.



### 3. The campaign

The campaign started rather late because of a lack of public awareness of the workings of the MK Boundary Review Committee. After the Committee's decision in March 2010; to recommend no change to the WCC boundary; a group of local residents from Woughton On The Green, Woughton Park and Passmore was formed to pursue this campaign. Membership represents residents associations, long standing residents, as well as those who have recently moved to the area. It is a group of people with a very broad and mixed range of backgrounds, ages and occupations.

The campaign has concentrated on three main tasks:

- discovering the views of residents;
- understanding the implications of creating a new Parish and
- communicating with residents and other stakeholders.

*"We feel a new small Parish Council will be more representative of our common interests and needs."*

Stakeholders included all MK Councillors, neighbouring Parish Clerks, CEO MKC, The Parks Trust, Thames Valley Police, Broughton Fire Service, MK Dons, British Waterways and local businesses. Copies of the newsletters are at Appendix 6. The campaign website is [www.sibc.org.uk](http://www.sibc.org.uk).

Whilst increasing its knowledge of the area and its administration, the campaign team is grateful for the very professional assistance it received from MK Council Officers, CEO of Woughton Community Council, Simpson & Ashland Parish Clerk and others including the Chairman of the Patch Allotments, the Vicar and church wardens of St Mary's Church and local businesses.

Since beginning the campaign the following has been accomplished:

- Two full surveys of residents in the proposed new parish (Summer/Autumn 2010, postal survey and Spring 2011, door to door survey);
- Delivered several informative newsletters to residents and other stakeholders;
- Submitted an earlier version of this document to the boundary review committee;
- Made representation to the Parish review working group, the full council meeting on 19<sup>th</sup> October 2010 and all public meetings of the 2011 governance review panel;
- Consulted with residents on communication and local issues;
- Established a campaign website to further inform residents and stakeholders;
- Met with Peartree Bridge residents group, following an invitation to help them further understand our campaign;
- Met with Tinkers Bridge residents association;
- Called a residents meeting in April 2011 with over 100 residents in attendance.

*"We were disappointed to hear of the outcome of the meeting of the Parish Review working Group on 17th March (2010). We originally expressed the view that we had no desire to remain as part of the existing Woughton Parish Council arrangements and remain of this view. We believe that the current arrangements do not adequately represent our interests and that we derive very little benefit from the existing Parish Council. We are of the view that a new smaller Parish Council which directly represents the views and aspirations of like minded communities who have the greatest local affinity would be in our best interests. The new Parish Council would provide us with an opportunity to directly influence the decisions which affect our community and to derive the best possible tangible benefits in an efficient and cost effective way. Accordingly, we fully support the proposal to form a new Parish Council comprising the communities of Passmore, Woughton Park and Woughton On The Green."*

#### 4. Postal survey of residents – completed September 2010

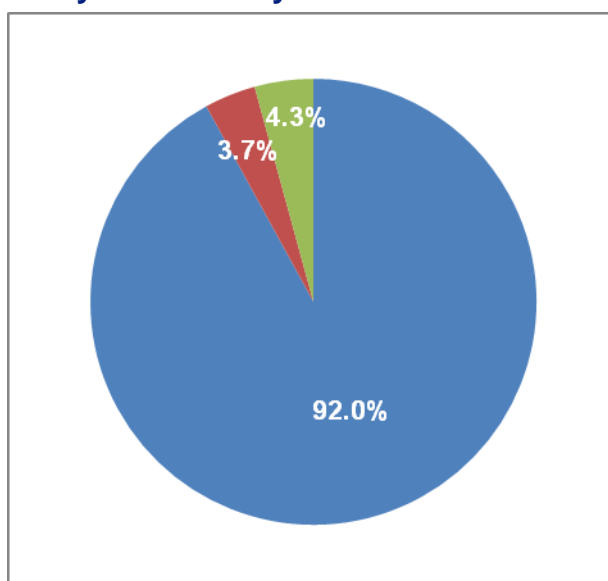
A rigorous research programme was carried out to obtain the views of residents within the campaign area. The methodology is described in Appendix 2. The comments provided by residents are tabulated in Appendix 6.

**4.1 Statistical Results.** 191 surveys were returned out of a base of 378 occupied households, a response rate of 50.5%.

The below chart shows the responses received:

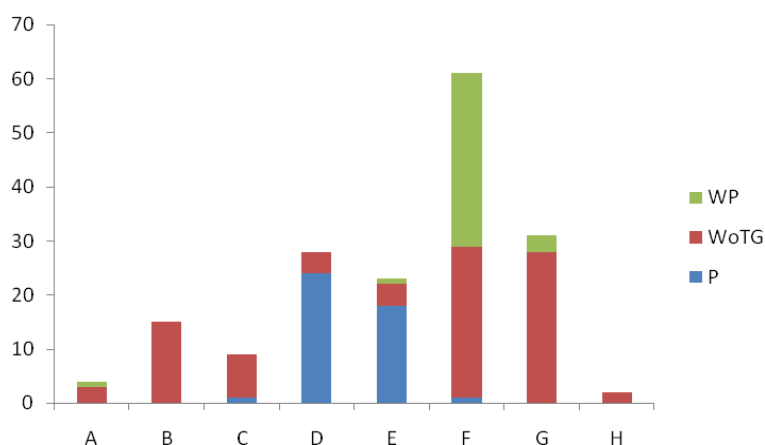
- 92.0% were in favour of the SiB campaign;
- 3.7% wanted no change;
- 4.3% (8 households) were in favour of moving to Simpson and Ashland parish.

**Figure 2: Graphical analysis of survey returns – 50.5% of occupied households**



The surveys were completed by residents from a representative spread of Council Tax Bandings indicating our earlier assertion about the diversity within the proposed Parish.

**Figure 3: Graphical analysis of survey returns by council tax banding and area**



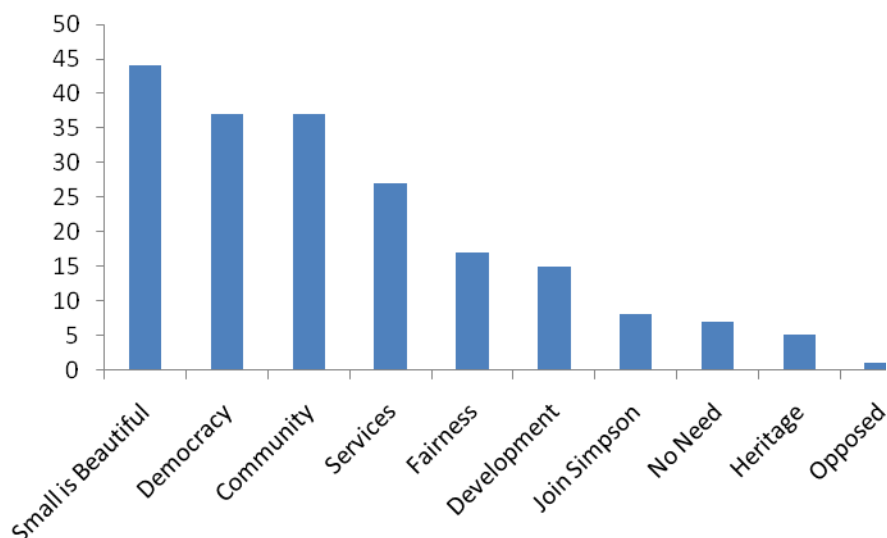
**4.2 Descriptive Results.** From the 191 completed survey responses received, 120 contained written comments. These comments indicated a strong dissatisfaction with



the current arrangements under WCC and clear ideas about what residents would like instead.

The response topics are defined as follows and the number of responses in which they are contained is shown below.

**Figure 4: Survey comments by topic**



The following is a representative sample of residents' views (full list of survey comments in Appendix 6):

**4.2.1 “Small is Beautiful” (44):** There was immediate and strong resonance with the group's leading assertion; a small Parish would be more responsive to its residents' needs and in-tune with its culture.

*“A small parish and council would be more suited to administer and support the lower level of community functions and events desirable.”*

*“Small is efficient and beneficial to residents.”*

*“A smaller, more cohesive group of residents in an area with common or similar philosophies of self help and social need.”*

*“I am sure that people would be much more willing to support and help with projects and ideas if the Parish Council was more localised and focussed on the areas that are local to us.”*

*“The existing larger Parish does not appear to adequately deal with our local issues and ideas, probably due to its size and many differing views across this much larger and unwieldy area.”*

*“As mature parents of a young child we would welcome a small community of likeminded families in which we can become involved, as we share similar needs, ages and backgrounds, which we do not share with the larger parish as a whole.”*

*“Our aspirations are more easily attainable in the smaller proposed parish – returning more to the “village” principle.”*

**4.2.2 “Democracy” (37):** The proposed new Parish would provide much greater democratic accountability to its residents.

*“A new parish Council would return democracy to “grass roots” where people can feel that they can make a difference.”*

*“We feel a new small Parish Council will be more representative of our common interests and needs.”*

*“A smaller parish council will be more manageable and the views of local residents can be heard and taken into account.”*

*“Fair representation is a phrase that has been extensively used by ministers of late and that’s all we are seeking, no more no less.”*

**4.2.3 “Community” (37):** Views on community spirit and how it could be improved.

*“It is easier for residents to engage more fully within a smaller Parish Council and create a real community.”*

*“The proposed new parish would have a good mix of residential housing including, council house tenants, shared ownership, buy to let, private rental tenants, and owner/occupiers. This would be ideal in building a close-knit community.”*

*“We need a parish council that will promote the self help ethos engendered in our areas.”*

*“The existing civil parish is an impossible community with such diverse social and practical needs that will never come together in the way that a smaller and more compatible grouping could achieve.”*

*“We want a Parish that gives positive encouragement to residents to create a vibrant, unified community so that the dependency on employed staff is minimised.”*

**4.2.4 “Services” (27):** Comments mainly about the lack of value for money of service provision in the 3 areas.

*“As a matter of principle, I think it is wrong that we should have to contribute more financially to deprived areas than other MK residents.”*

*“Requests for small items to benefit our residents are being ignored/promises broken.”*

*“Our services could be provided quickly and efficiently – people would then become more interested in what’s happening in their Parish Council.”*

*“I would like to see a Parish that focuses on core essential services at reasonable value for money cost, with non essential services (such as the Carnival and other social events) funded separately on a voluntary basis by those who want and can pay for them, especially during this recessionary period.”*

**4.2.5 “Opposed” (1):** It would be wrong to change the current parish boundary arrangement.

*“This idea of cutting ourselves off from those areas of Woughton Parish where the residents have greater needs for support is unpleasantly selfish and “nimbyish” and leaves you and your group of supporters open to the criticism of intending to create a “middle-class ghetto”.*

**4.2.6 “Development” (15):** Ideas on how the new Parish could be developed and strengthened.

*“A smaller parish council will enable funding to be more specifically allocated to our needs, eg better maintenance of trees and vegetation, more regular emptying of dog bins, a mobile library coming to the area for older residents, a review of rents/rates to enable a village shop to re-open in Woughton On The Green.”*

*“Many residents want to work together to create a future that benefits us all.”*

*“We want to reserve the area’s green character and eradicate noise pollution by high speed traffic.”*

*“I would like to see our area being prioritised for improvements and residential input. 2 play areas have been installed/renewed and no local opinion has been requested.”*

**4.2.7 “Join Simpson & Ashland” (8):** If there is to be a change in parish boundaries, Woughton Park should join with Simpson & Ashland or another parish.

*“It would make more sense to me to join another area, e.g. Simpson or Kents Hill.”*

*“I believe that it’s more cost effective for Woughton Park to join with a nearby similar Parish like Simpson in order to avoid the overhead cost associated with creating a new Parish and the requisite infrastructure.”*

**4.2.8 “No Need for Change” (7):** The existing parish boundary structure is either okay or there should be no parish tier of local government within Milton Keynes.

*“We question the need for Parish Councils. The MK Unitary Authority is small enough to deliver services at the parish level without the need for a fourth tier of representation. If Parish Councils did not exist in MK it would not be necessary to invent them. So our preferred solution is no Parish Council with resources at the city level thereby increased.”*

*“Not broke. Don’t fix it.”*

**4.2.9 “Heritage” (5):** Preserving and valuing the heritage of the new Parish.

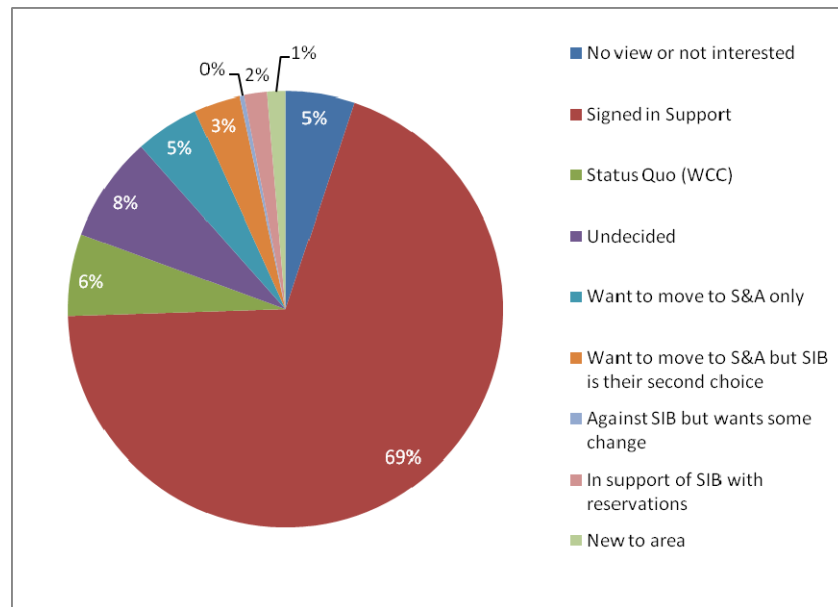
*“The 3 areas have much in common and already share close social ties with the historic Ye Olde Swan and St Mary’s Church providing natural meeting points.”*

*“A small parish where all use this most beautiful amenity is more likely to cherish it and assist the local council and waterways associations to keep it as a beautiful amenity to be enjoyed by all.”*

## 5. Doorstep survey of residents – April/May 2011

In order to validate and extend the initial survey results, a door to door survey was carried out during April and May 2011. Residents were asked to sign either 'in support of the SiB campaign', 'in support of remaining with WCC', or to state 'other' and confirm their view in a comments box. The responses are grouped as shown in Figure 5.

**Figure 5: Summary of the door to door survey in Spring 2011**

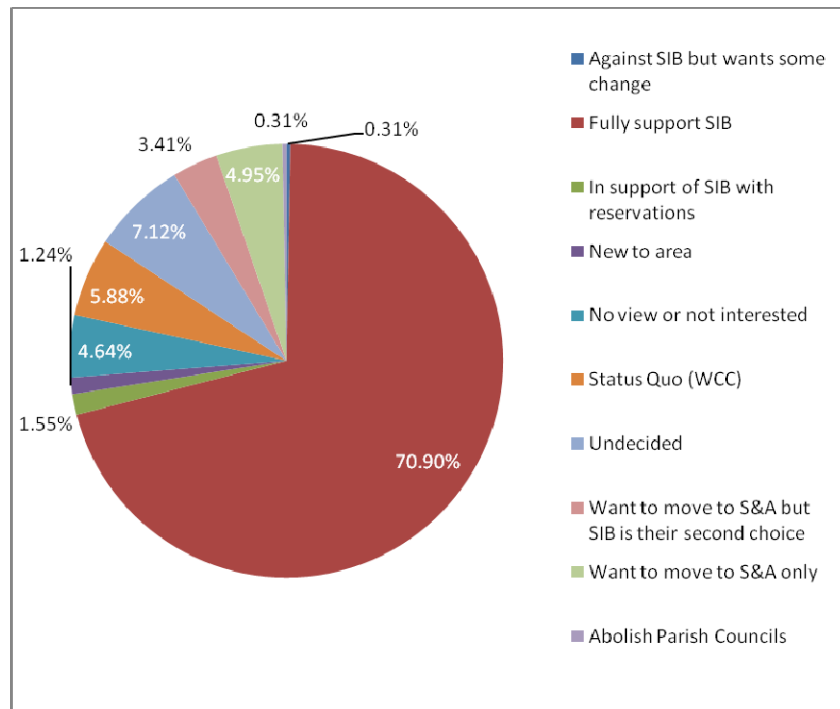


The results show an increase in support since Autumn 2010, with over 50% of homes signing in favour of the proposal.

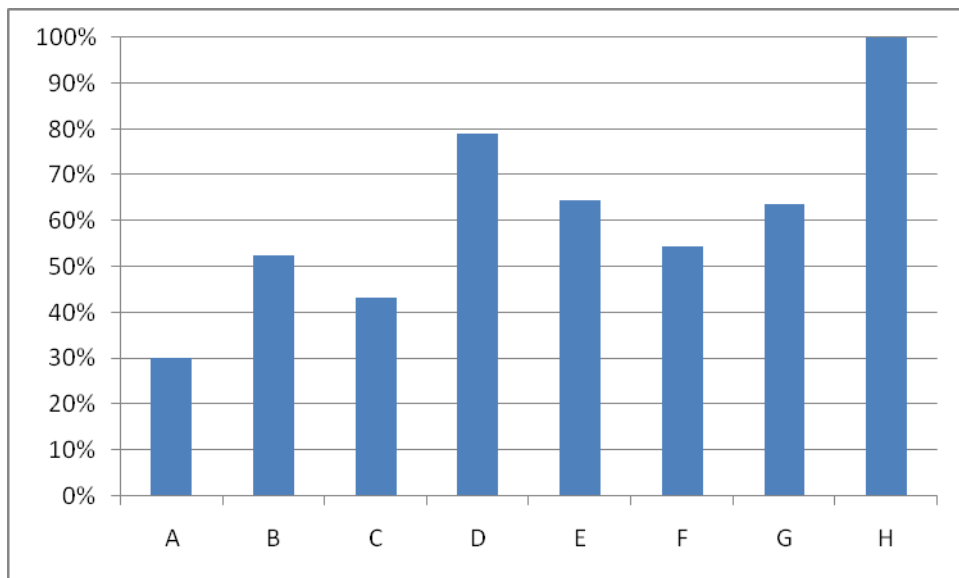
In order to give a full picture, the results of the two surveys have been combined. Of the households that did not respond in April 2011, 29 had returned a survey in 2010. For these households their summer 2010 view was used. The combination of survey results thus increased the response rate to greater than 80%. The combined results are shown in Figure 6.

*“The proposed new parish would have a good mix of residential housing including, council house tenants, shared ownership, buy to let, private rental tenants, and owner/occupiers. This would be ideal in building a close-knit community.”*



**Figure 6: Summary of the combined survey results**

One of the questions asked of the campaign has been “*Are you trying to create a middle class ghetto?*” Figure 7 shows the households who support the campaign analysed by council tax banding. The results are shown as a percentage of the total properties in each council tax band and have not been adjusted to take account of unoccupied properties. This demonstrates widespread support across all bandings.

**Figure 7: Support by council tax band**

The conclusions that can be drawn from the campaign’s extensive consultation exercises are that residents want change and support for that change comes from a diversity of households.

## 6. Residents meeting 12<sup>th</sup> April 2011

On Tuesday 12<sup>th</sup> April the campaign team held a meeting for all residents from the three areas, hosted by St Mary's Church Woughton On The Green. Invitation was restricted to residents with the exception of John Moffoot, Deputy Director, Democratic Services, MKC. Over 100 residents, including both ward Parish Councillors, attended the meeting. Signing in sheets were used to record those attending and to allow people to request a copy of the slide presentation.

Analysis of the sign in sheets against the survey data shows the following:

- there was at least one resident present from nearly every street in the three areas (18 out of 23 streets);
- there was a representative spread of council tax bands present (at least one from each band);
- there was a representative spread of views present.

The meeting comprised:

- a short presentation on the campaign so far;
- the opportunity to ask questions;
- information about what a parish council does and how it works;
- an opportunity to share views.

*"Why don't they just make a decision?"*

Many challenging questions were asked of the campaign team and honest responses given. During the lively debate it became clear that many had very strong ideas of improvements that could be made to the local area. Some of the suggestions are:

- Children's play park – Lucas Place;
- A 'no entry' sign by the tree at Newport Road leading to the Green;
- Resolve problem of access from rear of houses in Lucas Place to the recreation ground;
- Traffic calming measures in Lucas Place;
- Resolve problem of camping on Sports field & associated car parking during festivals;
- Salt & grit bins for Passmore;
- Coffee mornings in the village hall;
- Activities for children in the area;
- Pruning for the community orchard.

Since the meeting further suggestions have been made and they are:

- Use of the oxbow lake at north end of Woughton On The Green for fishing;
- Salt and grit bins at the junction of Baskerfield Grove and Newport Road;
- Encouragement of use of existing dog bins;
- Provision of locally based activities for children.

The meeting clearly demonstrated growing and enthusiastic community spirit and many people commented afterwards that the meeting brought together residents from all backgrounds and gave them the opportunity to meet and get to know one another.

## 7. What might the new parish look like?

The proposed parish will be small because that encourages local residents to engage more easily; it will be beautiful by maintaining the locality and it will be well managed by being accountable to the residents who will elect their representatives. The proposal seeks to encourage a spirit of co-operation both within the parish, with neighbouring parishes and MKC.



As part of the campaign team's work a thorough review of the area has been undertaken in order to put together a picture of the proposed parish and what would be needed to manage it.

### 7.1 Assets.

A survey of the assets of the proposed 'Small is Beautiful' parish indicates that it is a semi-rural area with a long history and good infrastructure. A full list of these assets is included in Appendix 1.

### 7.2 Demographics.

A selection of the current demographics of the proposed parish is shown in Appendix 3. This has been compiled with the help of MKC officers. The proposed parish has a spread of property bandings within a 'normal' distribution i.e. about 75% of properties are in the mid range (C,D,E,F) balanced by almost equal proportions of higher (G,H) and lower banding properties (A,B).

*"A smaller parish council will be more manageable and the views of local residents can be heard and taken into account."*

### 7.3 Potential responsibilities.

A number of responsibilities would be inherited by the new Parish. These are as follows:

**The sports pavilion and associated facilities.** These facilities will be operated under contract to MKC although the parish will have a role on the steering committee to ensure residents' views are represented. This facility offers the potential for wider community use.

**The village hall.** This is currently leased by WCC from the Diocese of Oxford. It is used as a polling station and, very occasionally, is rented out for private functions. Although the rent is very low it requires significant annual expenditure for maintenance. It is small and lacking in facilities. It will be important to have a parish meeting place for which other options are available such as; St Mary's Church, where the vicar is keen to encourage its use as a meetings and functions venue, and the recently renovated sports pavilion.

**‘The Patch’ allotments.** The allotments are currently run by a committee with administrative support from WCC. The allotments are a valuable community resource. It is proposed that tenancies will continue to be open to residents from surrounding parishes. ‘The Patch’ allotments committee would be given autonomy and, where required, receive administrative support from the parish.

**Parish clerk.** The new parish would seek to work with another parish to share an experienced clerk and thus keep costs to a minimum.

**Dog bins.** The new parish would review the provision of this facility and, where supported by the residents, continue to offer it.

**Notice boards.** There are currently two parish notice boards and their use would be reviewed by the new parish.



#### 7.4 Would the new parish be financially viable?

The new parish would wish to adopt an approach based on volunteering, thrift and co-operative service sharing with surrounding Parishes with the aim of minimising costs. The parish would not require office space or functional staff.

All significant spending would only be undertaken if endorsed by parish residents and be based on specific value for money performance targets.

It is estimated that the cost of supporting the allotments, servicing the dog bins and providing parish administration is somewhere between £10,000 and £15,000 representing a Band D precept of between £21 and £31 per year. A full breakdown of proposed precepts is shown in Figure 8 below, and Appendix 4 shows a table of the comparative Parish Precepts in Milton Keynes.

**Figure 8: Provisional precept scoping estimates**

Council Tax Bands		A	B	C	D	E	F	G	H
Ninths	Yields	6	7	8	9	11	13	15	18
Set Band D at £1	£484.46	£0.67	£0.78	£0.89	£1.00	£1.22	£1.44	£1.67	£2.00
Precept for proposed parish	£5,000	£0.76	£0.89	£1.02	£10.32	£1.40	£1.66	£1.91	£2.29
	£7,500	£1.31	£1.53	£1.75	£15.48	£2.41	£2.85	£3.29	£3.94
	£10,000	£3.02	£3.52	£4.02	£20.64	£5.53	£6.53	£7.54	£9.05
	£15,000	£10.37	£12.10	£13.83	£30.96	£19.02	£22.47	£25.93	£31.12
	£20,000	£47.58	£55.51	£63.44	£41.28	£87.22	£103.08	£118.94	£142.73

*“I would like to see a Parish that focuses on core essential services at reasonable value for money cost, with non essential services (such as the Carnival and other social events) funded separately on a voluntary basis by those who want and can pay for them, especially during this recessionary period.”*



## 8. Latest developments

As this proposal was being finalised the following matters have been identified.

### 8.1 The 'Join with Simpson and Ashland' Campaign

There are a number of residents of Woughton Park who would like to be a part of Simpson and Ashland Parish. They feel they have a historical alignment with Simpson village. Many of these residents consider the Small is Beautiful campaign to be their second choice, as their primary objective is to be part of a small, representative parish.

The Small is Beautiful campaign team acknowledges the views of these residents and will work with them and the governance review panel to arrive at the most appropriate solution.

### 8.2 The Tinkers Bridge Campaign

As this proposal was being finalised contact was made by community representatives from Tinkers Bridge. It is understood that there may be support from residents of that estate to either form their own independent parish or join with a nearby small parish. The timing of this submission is such that a full canvass has yet to be completed.

### 8.3 Peartree Bridge

Two members of the campaign team met with a group of residents from Peartree Bridge as part of their April monthly meeting. Residents attended from Waterside, Woodley Headland and Jeeves.

Residents asked a number of questions to help them better understand the campaign and welcomed the opportunity to discuss the matter. An agreement was also made to work closely in the future with our immediate neighbours.

*"The proposal for a new small PC should allow the locality to focus on the needs of its community rather than have these submerged within the over-sized WPC. The 3 areas have much in common and already share close social ties with the historic Ye Olde Swan and St Mary's Church providing natural meeting points. The fact that Simpson, with only 315 households, flourishes as a PC suggests a new one based on 398 can also be viable and successful. If there is an overwhelming majority in favour of the proposal, MKC should bow to the democratic views of the residents."*

## Appendix 1: Buildings, assets and services within the area

The campaign surveyed the area and identified the following assets:

### General Assets

The village hall

The village green near the village hall is a large open space dating back to the Iron Age  
Mercure Parkside Hotel.

St. Mary's Church

Small business properties.

'The Patch' allotments

Ye Olde Swan Public House.

Sports club and pitches.

Grass pitches for football, baseball and cricket.

Astro-turf pitches for tennis and hockey plus two hard court pitches for tennis.

An enclosed floodlit pitch for 5 a side football etc.

The orchard.

The "winery" (not in use).

Four pedestrianised hump back canal bridges linking to neighbouring western areas.

1 canal footbridge.

4 footbridges over River Ouzel linking to neighbouring eastern areas.

Canal towpaths

Fishing is also possible in both the canal and the nearby River Ouzel.

Bridleways Foot and bridlepath network in linear park and riverside.

Substantial Redway network linking the three areas.



Several pedestrian under-passes to:

H7 Chaffron Way and H8 Standing Way.

The linear park, managed by the Parks Trust, is also used for the grazing of sheep and cattle, the meat of which can be purchased locally.

### **Passmore.**

The Millennium Rose Garden provided by the Residents' Association

Two bus shelters opposite each other on V8 Marlborough Street.

Royal Mail collection box.



### **Woughton Park.**

Two dog waste bins, one on the footpath leading to the canal side and one adjacent to the hard play area near the H9 bridge over the canal.

Royal Mail collection box.

Parish Notice Board

### **Woughton On The Green.**

Four dog waste bins, one on the green, one near the telephone box adjacent to 'The Close', one close to the Water Gardens and one by the canal bridge to Peartree Bridge.

Two bus shelters, one near Lucas Place and another at Baskerfield Grove.

Two Royal Mail collection boxes, one near Ye Olde Swan and one at the Baskerfield Grove bus stop.

Two childrens play areas near Adams Court and Bellis Grove.

Ancient fish ponds and information boards.

Parish Notice Board



### **Local bus routes.**

Buses through the area include the number 5 that skirts along the V8. The number 17 runs between the Rail Station/CMK and Cranfield, and the number 18 runs between Bletchley and CMK – both running through Woughton On The Green and Woughton Park.



## Appendix 2: The research approach

The campaign used primary and secondary research methods, as practised in business, academic and public services environments.

### Primary research

The initial phase took the form of a single-sided survey questionnaire to all of the 393 households in the area. An explanatory letter was included with a separate one-page short questionnaire. It launched in June 2010 and was completed by September 2010.

A further phase took the form of door to door canvassing across all households. Canvassing was carried out by the campaign team members during April and May 2011.

### Secondary research

This was conducted with the support and co-operation of officers in several departments of MKC. There were various sources of data provision including:

- Published local area statistics;
- Local area extracts from the MK council tax database.





## Appendix 3: Demographics for Polling District MD

Data derived from official statistics.

**Table 1: Population**

Population estimates are from doctors' surgery registration data for April 2010

	<b>Total</b>	<b>Passmore</b>	<b>Woughton Park</b>	<b>Woughton On The Green</b>
Total	933	193	170	570
Male	470	99	85	286
Female	463	94	85	284
Up to 15	118	14	16	88
16 to 74	755	165	143	447
75 Upwards	60	14	11	35

**Table 2 – Dwellings**

Totals are spring 2011 council tax band data.

	<b>Total</b>	<b>Passmore</b>	<b>Woughton Park</b>	<b>Woughton On The Green</b>
Total	395	75	75	245
Owner Occupied (E)	311	72	74	165
Privately Rented (E)	62	3	0	59
MK Council Stock (E)	10	0	0	10
Shared Ownership (E)	12	0	1	11

**Table 3 - Council Tax**

Council Tax snapshot.

	<b>Total</b>	<b>Passmore</b>	<b>Woughton Park</b>	<b>Woughton On The Green</b>
Total	395	75	75	245
Band A	20	0	0	20
Band B	42	0	0	42
Band C	37	1	0	36
Band D	57	41	0	16
Band E	45	33	2	10
Band F	122	0	64	58
Band G	70	0	9	61
Band H	2	0	0	2

**Table 4 – Electoral Roll Analysis****Electoral Roll FULL - Analysis SUMMARY-31July2010-v1**

08:47 31/07/2010

**PD-MD Electoral Roll - Counts**

	<b>TOTAL Electors</b>	<b>Male</b>	<b>Female</b>	<b>Not obvious</b>	<b>TOTAL Households</b>	<b>1 Adult</b>	<b>2 Adults</b>	<b>3 Adults</b>	<b>4 Adults</b>	<b>5+ Adults</b>	<b>Electors per Household</b>
<b>TOTAL</b>	<b>772</b>	<b>358</b>	<b>375</b>	<b>39</b>	<b>378</b>	<b>108</b>	<b>191</b>	<b>47</b>	<b>22</b>	<b>10</b>	<b>2.04</b>
ADAMS	53	22	31	0	30	14	10	5	1	0	1.8
BASKERFIELD	46	24	21	1	22	4	14	2	2	0	2.1
BELLIS	9	5	4	0	5	1	4	0	0	0	1.8
BOWLES	16	7	9	0	11	7	3	1	0	0	1.5
CLOSE - The	15	10	5	0	8	4	1	3	0	0	1.9
GREEN - The	46	22	24	0	22	3	15	3	1	0	2.1
GREYS - The	22	12	10	0	8	0	6	0	1	1	2.8
GOODMAN	38	19	19	0	21	7	12	1	1	0	1.8
LUCAS PLACE	70	22	45	3	50	33	14	3	0	0	1.4
NEWPORT	36	20	14	2	15	4	5	3	2	1	2.4
ODELL	12	5	6	1	5	0	4	0	1	0	2.4
PASSMORE	173	85	85	3	74	11	41	14	4	4	2.3
PINKARD	8	3	5	0	4	2	1	0	1	0	2
ROGERS	12	5	3	4	9	6	3	0	0	0	1.3
TURPYN	4	3	1	0	1	0	0	0	1	0	4
VERLEY	56	22	20	14	23	4	11	3	4	1	2.4
BRAUNSTON	24	12	10	2	11	0	9	2	0	0	2.2
CASTLE	13	6	7	0	7	2	4	1	0	0	1.9
ELTON	18	6	9	3	9	4	3	1	0	1	2
FOXTON	36	17	18	1	17	1	13	3	0	0	2.1
MEDLAND	36	16	15	5	14	0	10	1	2	1	2.6
NORTHWICH	23	12	11	0	9	1	5	1	1	1	2.6
SADDINGTON	6	3	3	0	3	0	3	0	0	0	2

## Appendix 4: Precept Data

**Table 5 – Borough Wide Precept Data 2011-12**

Parish	Charge per average band D property £	2011-12 total precept £
WOUGHTON	134.98	495,435
BLETCHLEY & FENNY STRATFORD	115.06	519,586
WEST BLETCHLEY	114.49	842,375
CAMPBELL PARK	107.22	511,610
WOLVERTON	90.00	329,195
WOBURN SANDS	84.71	94,815
WESTON UNDERWOOD	81.26	10,000
STONY STRATFORD	67.26	180,165
NEWPORT PAGNELL	61.56	325,073
OLNEY	56.70	147,610
STANTONBURY	56.13	169,616
EMBERTON	55.29	16,000
CASTLETHORPE	54.13	24,236
NEW BRADWELL	53.56	51,500
SHERINGTON	51.86	22,058
SHENLEY BROOK END	51.61	455,300
BOW BRICKHILL	51.20	13,000
LITTLE BRICKHILL	47.43	8,245
HANSLOPE	46.94	44,651
LAVENDON	44.48	24,000
BRADWELL	44.46	134,820
RAVENSTONE	42.61	5,100
HAVERSHAM cum LITTLE LINFORD	42.41	13,500
STOKE GOLDINGTON	41.41	11,172
NORTH CRAWLEY	40.91	14,170
SHENLEY CHURCH END	38.00	162,564
WAVENDON	36.05	13,000
ASTWOOD and HARDMEAD	33.98	4,000
LATHBURY	33.78	2,000
KENTS HILL, MONKSTON & BRINKLOW	26.56	69,795
GREAT LINFORD	24.61	158,322
BROUGHTON and MILTON KEYNES	20.99	56,000
CLIFTON REYNES and NEWTON BLOSSOMVILLE	20.82	4,250
GAYHURST	19.03	1,400
COLD BRAYFIELD	17.12	750
CHICHELEY	16.60	750
MOULSOE	15.25	2,250
SIMPSON & ASHLAND	11.56	5,000
ABBEY HILL [formerly Bradwell Abbey]	10.00	15,270
TYRINGHAM & FILGRAVE	7.98	900
LOUGHTON	7.50	17,598
WALTON	4.61	20,000
CALVERTON	0.00	0
CENTRAL MILTON KEYNES	0.00	0
FAIRFIELDS	0.00	0
WARRINGTON	0.00	0
WHITEHOUSE	0.00	0

## **Appendix 5: Campaign Newsletters**



Home: 01908 664119  
e-mail: [andrewhumphries@ukonline.co.uk](mailto:andrewhumphries@ukonline.co.uk)

1 Castle Rose  
Woughton Park  
MILTON KEYNES  
MK6 3BQ

20th May 2010

## Campaigning for a New Parish: *Small IS Beautiful!*

**Dear Householder, Neighbour, Friend,**

On 17th March MK Council's Parish Review Working Group voted against the views of the majority of our Passmore, Woughton on The Green and Woughton Park residents who, in MK Council's consultation exercise, stated they wanted to separate from our current parish council arrangement. Rather than taking this lying down we can rise to this challenge. We have one opportunity to reverse this decision; we can support an amendment when the decision is voted-on by the full Council later in the summer. In order to have any chance of success, we need to mount a united front and propose a strong solution. I have therefore agreed to co-ordinate our campaign and the following have formed a group to assist:

**Passmore:** Phillip Acott (666258), Mike Blomley (677419), Barry Hampson (664182)

**Woughton on the Green:** Roy Kenyon (670598), Phil Wareham (671208)

**Woughton Park:** Tricia Humphries (664119), Tim Mason (606953), Susan Pugh.

We are campaigning to create a new small Parish Council that brings together Passmore with Woughton on the Green and with Woughton Park. Collectively, these areas are already recognised by MK Council as 'Polling District MD'. The boundary of our Polling District MD means that all our localities are already treated consistently, and as an entity, for three of our four tiers of democratic representation; to elect: (i) our Member of Parliament in the House of Commons; (ii) our MEP in Brussels and (iii) our Borough Councillors in MK Council. Oddly, it does not apply to the fourth, our current parish council arrangement.

Our proposed new small Parish Council would give residents direct influence over decisions affecting our localities; it would fulfil our chosen local needs and aspirations, develop solutions and see them through to successful conclusions, efficiently and at proportional cost. We would provide the services that residents want, in a way that cannot happen currently because we are just a small fragment of a much bigger parish where the voices of our 2 parish councillors are 'lost in the noise' of another 19. With a new small Parish Council we would have a clear channel of communication with MK Council through our Borough and our new Parish Councillors. In short, our proposed solution will at long last allow us to enhance our engagement with the democratic process. We sense that many residents want to work together, to create a future that benefits everyone. With your help we can succeed.

We aspire to be small, to emulate nearby Simpson Parish Council who have just 315 households. Our three areas would be a parish of 398 households. Simpson successfully established itself as a Parish Council in 1997 in the last Parish Review, bringing recognition by MK Council after many years previously simply running as a "Neighbourhood" Council. These numbers are a few of the local statistics that are helping us to shape our proposal to full MK Council – there are more on the Briefing Sheet overleaf.

The purpose of this letter is to seek your support and ask for your views on the needs and aspirations of our three localities. There's a very short separate questionnaire which we invite you to complete and return to me, or one of your local representatives, as soon as possible, but no later than Friday 11<sup>th</sup> June. Please respond, so that we have evidence of the number of residents who support our proposed change.

Yours sincerely

**Andrew Humphries**  
Campaign Co-ordinator

# BRIEFING SHEET - POLLING DISTRICT MD

DATA ARE DERIVED MAINLY FROM OFFICIAL STATISTICS & ARE SUBJECT TO OCCASIONAL UP-DATE: ALL COPYRIGHTS ACKNOWLEDGED

## POPULATION — April 2010: population estimates from GP registration data

	TOTAL	Passmore	Woughton Park	Woughton on The Green
<b>TOTAL</b>	<b>933</b>	193	170	570
<b>GENDER:</b>				
Male	470	99	85	286
Female	463	94	85	284
<b>AGE:</b>				
Age Birth to 15	118	14	16	88
Age 16 to 74	755	165	143	447
Age 75 upwards	60	14	11	35

## DWELLINGS — Totals are April 2010 CT Band data. E=estimates for 2009; awaiting fully validated data

	TOTAL	Passmore	Woughton Park	Woughton on The Green
<b>TOTAL</b>	<b>415</b>	76	77	262
<b>TENURE:</b>				
Owner Occupied	307 E	72 E	73 E	162 E
Privately Rented	63 E	4 E	0	59 E
MK Council Stock	10 E	0	0	10 E
Shared Ownership	12 E	0 E	1 E	11 E

## COUNCIL TAX BAND: — April 2010 Council Tax snapshot

Band A	32	0	0	32
Band B	43	0	0	43
Band C	38	1	0	37
Band D	58	41	0	17
Band E	49	34	3	12
Band F	124	0	65	59
Band G	69	0	9	60
Band H	2	0	0	2

## OCCUPATION — Awaiting data

	TOTAL	Passmore	Woughton Park	Woughton on The Green
--	-------	----------	---------------	-----------------------

## DEPRIVATION — Awaiting additional data

	Passmore	Woughton Park	Woughton on The Green
Index of Multiple Deprivation	Not separated	S19.8/R23	S13.5/R42

S=Score; R=Rank of 109 MK settlements; high Scores = high deprivation

MK's highest Score is 51.6-Netherfield = Rank 1; lowest 3.5-Olney; Average-14, Mode-12, Median-11

2007 data

# Campaigning for a New Parish: *Small IS Beautiful!*

1. I/We support your campaign to form a new small Parish Council covering just the area of Passmore, Woughton on The Green & Woughton Park.

Please tick

☐

2. I/We have reservations about your campaign to form a new small Parish Council covering just the area of Passmore, Woughton on The Green & Woughton Park.

☐

Please provide your views below:

.....

.....

.....

.....

.....

.....

.....

.....

.....

.....

Address .....

..... Postcode .....

Phone ..... e-mail .....

Signature(s) & Name(s).....

Please keep me/us informed about your campaign progress.

☐

***Thank you ...***

**PLEASE RETURN TO ANY OF THE BELOW, NO LATER THAN FRIDAY 11 JUN 2010:**

Tim Mason, 16 Foxton, Woughton Park tim.mason1@ virgin.net	Susan Pugh 2 Northwich Woughton Park susanmpugh@ hotmail.co.uk	Barry Hampson 63 Passmore barry@beh.uk.com	Roy Kenyon, 13 Baskerfield Grove Woughton on the Green knynroy@aol.com	Phil Wareham 25 Baskerfield Grove Woughton on the Green easymail@btinternet.com
--	--	--	--	--

# **“Small is beautiful”: Campaigning for Parish Status in Woughton on The Green, Woughton Park & Passmore**

Residents' news letter 2 - July 2010

Welcome to another edition of the 'small is beautiful' news letter, which keeps you in touch with our campaign to gain our own Parish Council; one that meets our needs as local residents, that spends money wisely and brings our community together.

We're still listening to what you and other residents have to say; some residents have offered their help to our campaign (delivering leaflets, etc.). We are delighted to have your questions.

We're also carrying out a thorough audit of the area, right down to the location of every dog bin and post box. Don't let anyone tell you we're not serious about knowing this area inside out!

## *What's a Parish Council?*

In England, Parish Councils are the first tier of local government. Subject to certain exceptions, they are elected bodies and have variable tax raising powers. Parish councils have the power to precept (tax) their residents to pay for their planned and budgeted routine operations and sometimes to carry out special projects. Typically, a Parish Council employs and pays a part time clerk for essential administrative work; elected members work for free on behalf of their community.

## *What's a Borough Council?*

In our case it's MK Council; it is responsible for just about everything, roads, open space, policy development, granting planning consents, etc. Although Parish Councils are 'small fry' in terms of powers and responsibilities, they complement the role of a Borough Council.

## *Who else is receiving these News Letters?*

All our Borough Councillors, certain MK Council officers who help inform our campaign, our neighbouring Parish councils and various other stakeholders ranging from the Fire & Rescue Service to The Parks Trust.

## *Can a new Parish help me solve local issues?*

Yes, of course, and when we spot an issue that concerns a group of residents (as we already have), we'll speak to our local Borough Councillors.

## *The survey - so far*

We've received 185 completed questionnaires from local households. Subject to confirmation shortly by MK Council that our estimate of vacant properties in the area is correct, we calculate that 47% of local households have replied; this is a magnificent response, with a very substantial majority in favour of our campaign. A detailed analysis is well on its way and we expect to have fuller results in time for the next issue in a few weeks time.

## *Did you know?*

The village was originally just called "Woughton": the suffix was added in the Victorian era to distinguish the village from other nearby places with the same name; "On The Green" refers to the large grassy area that lay in the centre of the village: the traditional village green.

In the Domesday Book of 1086 Woughton on The Green was recorded as Ulchetone. This is an Anglo-Saxon name, which means Eoca's Farm. The village had gained its more modern name by the mid twelfth century when the manor was recorded as belonging to the Verley family.

By the time of Queen Victoria's coronation on Thursday June 28 1838, Woughton on The Green was a large village, due largely to the nearby Grand Union Canal, and later also to the railway, now the West Coast Main Line, that passed through to the nearby parish of Wolverton.

If you need a large print leaflet, please contact the editor: 07736393822

# **“Small is beautiful”: Campaigning for Parish Status in Woughton on The Green, Woughton Park & Passmore**

Residents' news letter 3 - August 2010

Welcome to another edition of the 'small is beautiful' news letter, which keeps you in touch with our campaign to gain our own Parish Council; one that meets our needs as local residents, that spends money wisely and brings our community together.

To further help us understand the process of creating our own Parish, we've been busy reading 'The Parish Councillor's Guide', which is in its 12<sup>th</sup> edition and was first published in 1922! This book is the bible of Parish Councils and we've assigned someone to read all 243 pages.

## *Bees, and everything you didn't know about honey*

You can hear the buzz in the air - it's the bees, of course, soaring on their foraging missions to collect the rich harvest of nectar and pollen from around our areas. We now have three hives on the allotments and at least two more at residents' addresses in Newport Road and along The Green; and we hear of plans for more to follow. Our local honey production is flourishing and we'll soon be able to buy 'Woughton on The Green Honey' that's set to earn us recognition as a 'bee-friendly village'. Honey is widely acclaimed to have medicinal properties; we hear that 'local' honey can de-sensitise hay fever sufferers to their locally airborne pollens; it has a history in treating wounds and, now, it is even being evaluated as a treatment of cancer. You can buy it in the jar; or you can buy it as 'Combe Honey' - simply serve in thin slices on fresh strawberries and raspberries, with a little cream - you'll never want another sweet, not even at The Ritz! And, just to think, it comes to your door direct from the producer - call for details.

## *Allotments*

We spent a few hours at the allotments and can report that they are very well run by a committee that has nothing to do with Woughton Community Council. Neither we nor they see any issue with the proposed new Parish Council.

The allotments are a fantastic community resource, offering a relaxed and controlled environment in which to grow your own food, flowers or even rearing chickens and enjoying free range eggs! The historic maps of Woughton on The Green village demonstrate that there's a long tradition of allotments associated with the village. The allotments are brimming with enthusiastic tenants who will find time to help others learn about the process of growing their own produce, managing land, or simply providing a tour of how eggs end up in boxes.

## *Missing man hole covers*

You may have noticed that some of the manhole covers have been stolen from Woughton Park and Woughton on The Green. The culprits of this act are clearly thoughtless individuals who have no regard for the public money required to replace them, nor the safety of residents who, whether pedestrian, cyclist or driver, may be placed at risk. If you see anything suspicious, get out your camera 'phone and pass some photos to the Police (or we can do it for you).

## *Liabilities*

Sadly, some residents have been told that if we were to create our own Parish, we'd inherit huge liabilities (such as staffing costs) from Woughton Community Council. We'd like to clarify this by stating this is **not** true. The liabilities we'd inherit are typical of any Parish - allotments (which are entirely self sufficient), a Parish Hall, etc.

## *The survey - so far*

We've received responses from approximately half of all homes in the proposed new Parish. We'd still like some more responses so if you haven't responded to our survey, we again invite you to do so; there's a copy overleaf - simply tell us when it's ready for collection, please?

And we've analysed our electoral roll and council tax list; more news in our September edition.

If you need a large print leaflet, please contact the editor: 07736393822



# **“Small is beautiful”: Campaigning for Parish Status in Woughton on The Green, Woughton Park & Passmore**

Residents' news letter 4 - October 2010

Welcome to another edition of the 'Small is Beautiful' news letter, which keeps you in touch with our campaign to gain our own Parish Council; one that would meet our needs as local residents, would spend money wisely and brings our community together.

## *Progress of the Campaign*

In Spring, MK's 'Boundary Review Committee', who were tasked with reviewing Parish boundaries, recommended no change to our boundary, which is when residents got together and formed this campaign group to demonstrate that the views of the majority should be respected. It is expected that the Boundary Review Committee will present their recommendations to the full Council on the 19<sup>th</sup> October.

The campaign group has completed its survey of our households; over 90% of you who replied were in favour of change – this is an incredible vote of confidence in our vision for a new democratic and accountable Parish, run by a council of local residents to meet the needs of all local residents.

Many respondents took the trouble to give their views: these overwhelmingly expressed the desire to form a smaller, more democratically accountable Parish in an area that is culturally cohesive. People also felt that in an age of increasing austerity, the new Parish would be able to make a strong contribution to the wider MK community.

We are represented by two Borough Councillors on Milton Keynes Council: we have already presented our case to Conservative Cllr. John Bint; he is planning to either submit or support an amendment to the Boundary Review Committee's recommendations at the Council meeting on October 19<sup>th</sup> that fully endorses our desire to form our own Parish comprising Passmore, Woughton on The Green and Woughton Park.

We are currently finalising a written Proposal which we will submit to Councillors. We have also approached LibDem Cllr. Sam Crooks, our other Borough Councillor, and he has agreed to present our Proposal to the LibDem Group in advance of the meeting.

Residents are encouraged to show their support by attending the Council meeting on the **Tuesday 19<sup>th</sup> October** at around **6 pm** (to be confirmed) in the Council Chamber, Civic Offices, 1 Saxon Gate East, CMK. Naturally, the results of the survey very clearly demonstrate that residents want their own Parish, but this additional show of commitment would serve to bolster our proposal. Residents are welcome to speak to the Chamber if they wish to do so (please make a Council Officer aware on arrival). We will send you a reminder 'flyer' a week before the meeting confirming the details.

The full Proposal is a 'chunky' document. If you wish to receive a management summary, please contact me below.

## *Allotments*

It has been suggested that if we form a new Parish, current allotment holders who reside outside the boundary of our new smaller Council would no longer be allowed to keep their patches. This is **not** true. We would be very happy for the current holders to stay, and furthermore, we are committed to working with the Patch Allotment Association to welcome people from surrounding Parishes that have yet to set up their own allotments.

If you need a large print leaflet, please contact the editor: 07736393822

John Baker, Editor: [jbaker@dryfish.org.uk](mailto:jbaker@dryfish.org.uk)  
Adams Lodge, 8 Baskerfield Grove, Woughton on The Green

# **“Small is beautiful”: Campaigning for Parish Status in Woughton on The Green, Woughton Park & Passmore**

Residents' news letter 5 - December 2010

Dear Resident

Welcome to this edition of the 'small is beautiful' news letter, all about keeping you in touch with the campaign to gain our own Parish Council; a parish that considers the needs of all residents, businesses and users of amenities fairly. I am your new editor and I look forward to hearing from you.

Regards, Lorraine King, Editor

## **Progress of the campaign**

We understand that there was some confusion in the different messages you received after the meeting, so we would like to clarify the current position.

### **What happened on 19<sup>th</sup> October?**

A number of us spoke on your behalf to put across the views expressed by you and your neighbours, through the survey. When it came to the debate and the eventual council vote, both Labour and Liberal Democrat councillors voted en-masse, with party, against the proposal. We were later advised that the voting was decided before the meeting and that any points made fell on deaf ears.

There was overwhelming support from the public gallery and a number of councillors in the chamber. Although not enough councillors supported us at this stage, a very clear message was put across. This was enough for us to gain the opportunity to put our proposal again.

### **What next?**

The council have agreed that our proposal is to be heard and decided upon by the end of October 2011. This means that very little will happen until the end of May 2011, then a review group will be formed by the council in order to consider our proposal and one presented by the residents of Campbell Park.

### **What can you do?**

Right now we would like to hear from you, what would you like to see in your parish? Talk to your neighbours and anyone who uses the facilities in Passmore, Woughton Park or Woughton On The Green. Most importantly please keep reminding us of any involvement you would like to have, we may not have called upon you yet, that is because we have barely begun. It is really important that the campaign team know we have your support, after all this is about you.

### **The full 42 page proposal document**

This is now available for you to have your own to read in hard or soft copy. The summary of the full proposal is on the reverse of this newsletter. Why not have a read and then decide whether you would like your own complimentary copy.

To order your copy, please provide the following information

Name .....

Address .....

.....

Email Address .....

For a large print version of this leaflet please contact me

[editor@sibc.org.uk](mailto:editor@sibc.org.uk)

Adams Lodge, Baskerfield Grove, Woughton On The Green

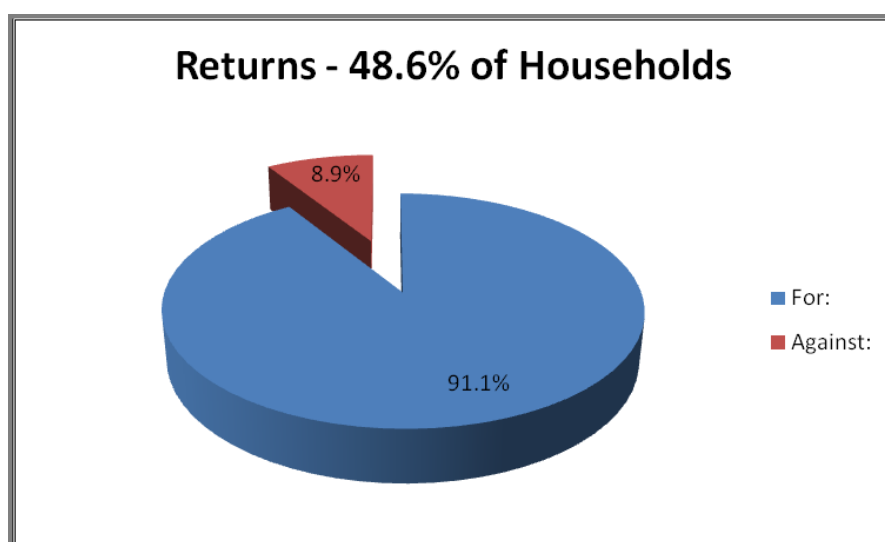
## Small is Beautiful Campaign Summary & Recommendations

This proposal is put forward on behalf of the residents of Woughton on The Green, Woughton Park and Passmore by a small working group drawn from the same three areas.

The proposal seeks the Council's approval for these areas to be granted Parish status; this would create a new parish of similar size and demographics to several other Milton Keynes parishes, such as Loughton and Simpson & Ashland.

Our "Community Vision" describes the collective views of the many residents who richly responded to the group's letter and questionnaire to all households in our areas during May and early June this year. And once we had launched our campaign, our regular communications stimulated considerable, positive feedback.

Their mandate is clear and unequivocal, "Small is beautiful!" they roar back to us. They provide a rich agenda for action to nurture and enhance their home domains. They also wish to join with the rest of the larger MK community in shaping the bigger picture in a challenging social and economic climate that is set to dominate the national psyche for some years to come. In presenting our proposal we must emphasise that our campaign group does not consider itself to be a 'parish-in-waiting'; nor does it seek to circumvent the due democratic process.



Our research endorses the headline numbers that emerged from the research that Democratic Services reported to the Council's Parish Boundary Review Group on March 17; it more than amply responds to the then observed lack of community vision that was a feature of that research.

The creation of a new parish would enable it to focus on developing the environment in a sustainable way. It would not only preserve and support the balanced diversity of the area but also allow us to concentrate increased support on those older, more vulnerable residents. It would allow the new parish to adopt a financial management approach that was in-tune with the greater need for economy as well as the needs of its residents. It would strengthen democracy in the areas concerned and fashion a clear-minded, self-reliant parish that would be an asset to the Milton Keynes community.

We, the overwhelming majority of the residents of Polling District MD, ask that the Council urgently considers this Proposal for parish status.

Moreover, we recommend that the Council approves our request and allows us to vest a new parish without delay.

**Andrew Humphries**  
Campaign Co-ordinator  
Andrew@sibc.org.uk

# **“Small is beautiful”: Campaigning for Parish Status in Woughton on The Green, Woughton Park & Passmore**

**[www.sibc.org.uk](http://www.sibc.org.uk)**

Residents' news letter 6

Dear Resident

Welcome to this edition of the 'small is beautiful' campaign news letter, all about keeping you in touch with the campaign to gain our own Parish Council; a parish that considers the needs of all residents, businesses and users of amenities fairly. Thank you to those of you who got in touch following our last newsletter, your comments and support are what drive the campaign.

Regards, Lorraine King, Editor

## **Progress of the campaign**

Things are constantly moving and changing at the council. We were pleasantly surprised to hear that the boundary review is being kick started now in order to ensure that the final outcome is produced by October 2011.

## **What next?**

As we noted in our last letter, the review will consider two separate issues; the first is our campaign to create an independent parish; the second is the boundary of Campbell Park Parish and whether Campbell Heights and Willen Village will remain a part of it.

## **What is the campaign team doing now?**

We are preparing the submission for the review and doing everything we can to express your views to the decision-makers. Thanks to your comprehensive response to our survey, we know your views on the matter. It is possible the council may ask for your views again, so please continue to show your support by responding if asked.

The campaign team is actively looking for more members to ensure we are fully representing your views. If you would like to know more about this then please contact Andrew Humphries on 01908 664119 or [Andrew@sibc.org.uk](mailto:Andrew@sibc.org.uk)

## **Your opinion counts**

You may not be aware that Woughton Community Council has recently twice asked for residents views. The first was on improvements to local areas and the second on whether to increase taxes. In both cases very few residents were aware of the request.

Your campaign team wish to have an effective and thorough way of ensuring that you can easily express your views to us on all things Parish. This is about the long term, as your parish is created and active.

## **What is the best way for you to express your views?**

Your team have considered this carefully and the following options are available:

- Email one of the team
- Text Messaging
- Pop a note in the letterbox of one of the team
- Telephone one of the team
- Feed my views back to a nominated street representative

Your campaign team also wish to understand how they can most effectively communicate with you. You will continue to receive the campaign newsletters. Your campaign team are also planning to hold open meetings, again we will provide details in the newsletter.

For a large print version of this leaflet please contact me

[editor@sibc.org.uk](mailto:editor@sibc.org.uk)

Adams Lodge, 8 Baskerfield Grove, Woughton On The Green

**“Small is beautiful”: Campaigning for Parish Status  
in Woughton on The Green, Woughton Park & Passmore**

**[www.sibc.org.uk](http://www.sibc.org.uk)**

Residents' news letter 6

**Which is the best way for you?**

Please let your campaign team know how you would like to communicate with them and ensure that what you want is heard and acted upon. Right now there may not be anything you wish to share, please still let us know the best route as in future something may come up for you.

To let us know your views please contact us by one of the following;

Email me [editor@sibc.org.uk](mailto:editor@sibc.org.uk)

Drop me a note at Adams Lodge, 8 Baskerfield Grove, Woughton on the Green

Telephone one of us	Woughton on the Green	Roy 670598	Lorraine 201918
	Woughton Park	Tim 606953	Andrew 664119
	Passmore	Mike 677419	Barry 664182

As always please let us know the following information;

Name.....

Address.....

.....

Mobile Telephone.....

Email Address .....

My preferred ways to share my views and receive information are;

Email one of the team

Text messaging

Pop a note in the letterbox of one of the team

Telephone one of the team

Feed back my views to a street representative

Use a website

Attend an open meeting

<input type="checkbox"/>
<input type="checkbox"/>
<input type="checkbox"/>
<input type="checkbox"/>
<input type="checkbox"/>
<input type="checkbox"/>
<input type="checkbox"/>

Please tick all that apply

I am interested in finding out what is involved in being  
on the campaign team

<input type="checkbox"/>
--------------------------

For a large print version of this leaflet please contact me

[editor@sibc.org.uk](mailto:editor@sibc.org.uk)

Adams Lodge, 8 Baskerfield Grove, Woughton On The Green



# **“Small is Beautiful”: Campaigning for Parish Status in Woughton On The Green, Woughton Park & Passmore**

**[www.sibc.org.uk](http://www.sibc.org.uk)**

Residents' Newsletter #7

Dear Resident

Welcome to this edition of the 'Small is Beautiful' campaign newsletter, all about keeping you in touch with the campaign to gain our own Parish Council; a parish that considers the needs of all residents, businesses and users of amenities fairly. A huge thank you to all who responded to the last newsletter and told us how you want to keep in touch. We also noted with some concern, the numbers who were not aware of the recent WCC consultations on tax and area improvements. Please continue to send us your views, they are all invaluable as the campaign progresses.

Regards, Lorraine King, Editor

## **Progress of the campaign**

Our next important deadline is April 28<sup>th</sup>, when we have been asked to re-submit the proposal to the Parish Boundary Review Committee. The team are working hard to prepare this and ensure that your views are properly represented.

## **The new campaign website**

The new campaign website [www.sibc.org.uk](http://www.sibc.org.uk) was launched last month and we are very lucky that the setting up and running of the website was kindly donated by a local business. The website is being updated on a regular basis and currently you can find the following:

- The opportunity to download any of the newsletters and the full proposal document
- Some frequently asked questions about the campaign
- A contact page so you can get in touch with the campaign team
- More information on any issues we raise in the newsletters

The new website is your opportunity to keep updated on the campaign at any time. We know that not all of you have internet access, so you can still contact us in other ways.

## **Responding to your questions**

When our team was delivering Newsletter#6 they were asked by a resident "how well he would be represented in the proposed new parish". Clearly this is an important issue so we are raising it in this newsletter.

## **Representation**

Currently the area is represented by two parish councillors on a council of 23. This means that Woughton Community Council have on average one councillor for every 236 homes. Our proposed new parish council would be obliged to have a minimum of five councillors this means that we would achieve one councillor for every 79 homes. We could choose to have more councillors if we wished and it will also be possible to elect councillors with specific responsibility for different parts of the proposed parish.

## **Being a councillor**

The SiB parish council will be an elected, voluntary council with all residents in the area having the opportunity to stand as a councillor and to vote for the council. Have you thought about being a parish councillor? It mainly involves deciding on local issues and getting involved with local people and their concerns. In a small parish this role really is about you, your neighbours and the area you live in. To find out more please go to the 'Frequently asked questions' page on our website [www.sibc.org.uk](http://www.sibc.org.uk) or contact me for more information.

For a large print version of this leaflet please contact:

[editor@sibc.org.uk](mailto:editor@sibc.org.uk)

Adams Lodge, 8 Baskerfield Grove, Woughton On The Green

# **“Small is Beautiful”: Campaigning for Parish Status in Woughton On The Green, Woughton Park & Passmore**

**www.sibc.org.uk**

Residents' Newsletter #7

## **What is happening in the area?**

The campaign team is keen to make you aware of any local issues that will help residents get in touch with each other in order to take action.

## **Planning application for the Mercure Parkside Hotel**

The Mercure Parkside hotel wants to remodel its entrance including a new sign on either side. If you have any views on this matter please contact the Council Planning Department by email: [Planning.Enquiries@Milton-Keynes.gov.uk](mailto:Planning.Enquiries@Milton-Keynes.gov.uk) or me by email: [editor@sibc.org.uk](mailto:editor@sibc.org.uk) and I will put you in touch with the other residents who expressed an interest.

## **Woughton Sports Pavillion**

A meeting was held on the 10<sup>th</sup> March, on the possibility of this becoming a local community centre. It's too late to cover the event in this issue; more on this next time.

## **MK BUG**

Milton Keynes Bus Users Group has formed to act as the independent voice of MK bus users and to improve services and the experience of bus users across Milton Keynes. The services through Woughton On The Green and Woughton Park are infrequent and for the elderly or infirm, walking through Peartree Bridge to the V8 to catch the bus to the shops or the station, is not an option. If you want to know more, or get involved, then please contact MKBUG directly by email on [Barbara.Ballantyne@hotmail.co.uk](mailto:Barbara.Ballantyne@hotmail.co.uk) or phone 01908 867942.

## **Open Meeting**

We will be holding an open meeting for you to come along, hear more about the campaign ask questions and make suggestions. This will be in the evening of Tuesday 12<sup>th</sup> April so please note the date if you wish to attend. Attendance will be by invitation only to all residents in the area due to the size of the venue. We will deliver your invitation, confirming the time and location, in the next two to three weeks.

## **Keep in touch**

To let us know your views about any campaigns please contact me by email or post, my addresses are at the bottom of the page; or,

Telephone one of us	Woughton on the Green	Roy 670598	Lorraine 201918
	Woughton Park	Tim 606953	Andrew 664119
	Passmore	Mike 677419	Barry 664182

Comments (including if you wish to find out more about the campaign):

.....

.....

.....

Name.....

Address.....

Telephone.....

Email Address .....

For a large print version of this leaflet please contact:

[editor@sibc.org.uk](mailto:editor@sibc.org.uk)

Adams Lodge, 8 Baskerfield Grove, Woughton On The Green

## {Small is Beautiful}

### Campaign for independent parish status for Woughton On The Green, Woughton Park and Passmore

[www.sibc.org.uk](http://www.sibc.org.uk)

Residents Newsletter #8

Dear Neighbour

Welcome to your latest newsletter. Firstly a correction from newsletter 7: any 'resident' of the area may become a parish councillor and you don't need to be a homeowner. Thank you to those of you who questioned and pointed out this mistake.

Much has happened since the last edition in March; so here is as much as we could fit in; for more details please get in touch with me or a member of the team or go to [www.sibc.org.uk](http://www.sibc.org.uk). I have particularly enjoyed meeting so many of you on your doorsteps and in the residents meeting on 12<sup>th</sup> April. Regards, Lorraine King - editor

#### Residents meeting

Around 100 of you attended the residents meeting at St Mary's Church on 12<sup>th</sup> April. There was someone there from almost every street in the area; so you and your neighbours were well represented. John Moffoot - Head of Democratic Services at Milton Keynes Council - also attended as a specially invited guest. The team gave a brief presentation and then most of the evening was spent sharing views and asking questions. You were able to meet the team and your neighbours; and based on the feedback we have received this was the part you most enjoyed. Copies of our presentation and handout are available on the website [www.sibc.org.uk](http://www.sibc.org.uk) or for a printed copy ask one of the team.

Our thanks go to Norma and Brian Baldwin; who hosted on behalf of St Mary's Church.

Just some of the things you suggested are listed here:

- Children's play park - Lucas Place
- A 'no entry' sign by the tree at Newport Road leading to the Green
- Resolve problem of access from rear of houses in Lucas Place to the recreation ground
- Traffic calming measures in Lucas Place
- Resolve problem of camping on Sports field & associated car parking during festivals
- Salt & grit bins for Passmore
- Coffee mornings in the village hall
- Activities for children in the area
- Pruning for the community orchard

#### The cost of running our own parish

The campaign is principally focussed on building community spirit and representation for residents. A number of you have expressed an interest in the costs involved. At this point we can only give you a very broad outline of the basic costs because our needs might change in the future. We estimate that the cost of supporting the allotments, servicing the dog bins and providing parish administration is somewhere between £10,000 and £15,000 per year. This represents a Band D precept of between £21 and £31 per year. The team know you want services delivered with the minimum overhead costs.

#### On the doorstep

During April the team went round and knocked on every door in the area. We managed to speak to over half the households. You have confirmed your views on the campaign and the support is still overwhelming. The results will be published in our updated proposal and in the next newsletter.

For a large print version of this leaflet please contact: [editor@sibc.org.uk](mailto:editor@sibc.org.uk)  
Adams Lodge, 8 Baskerfield Grove, Woughton On The Green

## {Small is Beautiful}

### Campaign for independent parish status for Woughton On The Green, Woughton Park and Passmore

[www.sibc.org.uk](http://www.sibc.org.uk)

#### **A sense of community**

Every time we speak to you, you share your views on the campaign and the local area. Views are diverse and varied but there is one clear message that comes through: you care about the area you live in and the community you share it with. This sense of community was really present at the residents meeting and is a core part of the campaign.

#### **The community governance review**

This is the name of the council run, panel that has been created to respond to our campaign for our own parish and the campaign by residents of Campbell Park to move parish. The panel comprises seven Milton Keynes borough councillors and is managed by John Moffoot and Paul Robinson, from the department of democratic services at the council.

On the 29<sup>th</sup>, 30<sup>th</sup> March and 14<sup>th</sup> April the review panel met: the first two meetings were to hear the proposals and views of the residents of Campbell Park and Woughton Parishes respectively; the third was to agree the process by which they would conduct the review.

We attended all three meetings and represented the campaign on your behalf. All meetings are open to the public and we have been advised to expect the next one in July. We will continue to let you know about these meetings so you can attend if you wish.

#### **Important - your action needed**

The review panel will write to all the residents in the areas concerned during the second half of May 2011. You will be asked to complete a questionnaire asking if you want change or not. It is vitally important that you support the campaign by completing and returning your questionnaire by the due date. This is separate to the information the campaign have already gathered, as the review panel want their own new survey completed.

We will be presenting our updated proposal to the review panel on 19<sup>th</sup> May. Please contact us before 14<sup>th</sup> May if you have any further suggestions, comments or views that you wish to include. The final document will be available on the website [www.sibc.org.uk](http://www.sibc.org.uk) or for a printed copy please ask any member of the team.

#### **Keep in touch**

Questions, suggestions and views can be directed to any member of the team

##### **Passmore**

Barry - 664182 [Barry@sibc.org.uk](mailto:Barry@sibc.org.uk)

Mike - 677419 [Mike@sibc.org.uk](mailto:Mike@sibc.org.uk)

Judith - [Judith@sibc.org.uk](mailto:Judith@sibc.org.uk)

Phillip - [PhillipA@sibc.org.uk](mailto:PhillipA@sibc.org.uk)

##### **Woughton Park**

Andrew - 664119 (Campaign Co-ordinator) [Andrew@sibc.org.uk](mailto:Andrew@sibc.org.uk)

Tricia - 664119 [Tricia@sibc.org.uk](mailto:Tricia@sibc.org.uk)

Tim - [TimL@sibc.org.uk](mailto:TimL@sibc.org.uk)

##### **Woughton On The Green**

Phil - 668434 [PhillipN@sibc.org.uk](mailto:PhillipN@sibc.org.uk)

Debbie - [Debbie@sibc.org.uk](mailto:Debbie@sibc.org.uk)

Lyndy - 07505 510016 [Lyndy@sibc.co.uk](mailto:Lyndy@sibc.co.uk)

Lorraine - 201918 (Editor) email [editor@sibc.org.uk](mailto:editor@sibc.org.uk) or push a note through the letter box

For a large print version of this leaflet please contact: [editor@sibc.org.uk](mailto:editor@sibc.org.uk)

Adams Lodge, 8 Baskerfield Grove, Woughton On The Green

## **Appendix 6: Full Database of Survey Respondents' Comments**



## Small is Beautiful Campaign - SURVEY COMMENTS - Issued 23 Sept 2010

Serial No:	Code No:	Topic Count	We Support	Have Concerns	No Change	Comments from Residents
68	031	5		√		I have concerns about the parish council in terms of its support and provision of services for the whole of its residential area. Although I understand that it covers areas of great need it seems all its resources are focussed to the area of high need, without any consideration to provide for all the other parts of its responsibility within the whole area. I believe that the parish precept levied by the Woughton Parish Council is extraordinarily high and therefore unreasonable. This is especially so as I believe that there are many who do not pay in the area and are subsidised by those who pay their council tax regularly and on time. I believe that a new parish council for the smaller area could more effectively represent the needs of that smaller community. I believe that the tactics of the Woughton Parish Council are underhand in terms of news letters utilising scare tactics over the commitments they have made. They are stating that a new parish council would be saddled with those financial commitments, which is not the case. I believe that this campaign is a direct result of the Woughton Parish Council ignoring and not allowing the representation from the needs of this part of the community.
56	015	4	√			We agree that a new, small Parish Council would fulfil our local needs/aspirations efficiently and at proportionate cost. The services that residents want would be provided in a way that cannot happen at present because we are a small fragment of a much bigger parish where our needs are forgotten amidst the many diverse requirement of a much larger population. Many residents want to work together to create a future that benefits us all.
130	046	4	√			Aspirations: to have a Parish Council that: Is able and willing to take account of all its residents equally Is willing to accept the aspirations of residents are important and to give them serious consideration through discussion, meetings and open decision making Provides a "value for money" service Accepts political dogma does not guarantee policies are automatically the best way of meeting the aspirations of residents Ensures the needs and aspiration of the residents takes precedent over party political dogma To engage with all residents regularly and effectively so that the Council can encourage the residents to support it Is not so large that the effectiveness of residents' representatives is reduced to an ineffective level Gives positive encouragement to residents to create a vibrant, unified community so that the dependency on employed staff is minimised. To have a Parish that: Lies entirely within the same Polling District as that for National, European and Local elections Gives its residents the ability to take an active part in the democracy of Parish government and to have the ability encouraged and appreciated. Is established in a way that allows the aspirations of the residents to be known and appreciated by Parish councillors. In addition, we have an additional aspiration. The residents of the areas have clearly shown their very strong views to the Parish Review Panel. It was effectively blocked by a Panel vote that was along party lines rather than a judgement of the strength of the arguments put to them. Therefore, it is essential that the Milton Keynes councillors be allowed the opportunity to have a free vote in the full Council meeting. Without this, the wishes of our residents are sacrificed to unthinking political expediency. This should be made abundantly clear to both of the Councillors currently representing the residents of Passmore, Woughton Park and Woughton on the Green. Other comments.1. Do remember not all Passmore residents are registered with a GP surgery within the existing parish. 2. Is the reason for Passmore being "not separated" known? 3. Would figures from the Electoral roll help determine numbers? . .

## Small is Beautiful Campaign - SURVEY COMMENTS - Issued 23 Sept 2010

Serial No:	Code No:	Topic Count	We Support	Have Concerns	No Change	Comments from Residents
55	051	4	√			1. Our three areas are already recognised by MK Council as Polling District MD, so it would seem natural that we should be an independent parish in our own right. 2. Break away from our present parish council because it is too big to accommodate our needs, as it has its fair share of problems. 3. To a new smaller parish council more suited to our particular needs and aspirations. 4. To be able to provide services that is not possible in our current situation. 5. To make decisions, control our everyday needs and concerns combined with collective problem solving within our own localities. This would mean we would be able to take decisions immediately without delay and without wasting valuable time in lengthy consultations. 6. We would be directly responsible to our democratically elected councillors who in turn would have direct contact with MK Council.
78	142	4	√			1. Present system undemocratic. 2 councillors have little influence on larger council of 19. 2. Needs of proposed new parish v. Different from more urban areas of remaining parish. 3. Already an entity – Polling District MD. 4. Historically and geographically linked therefore having similar needs, aspirations, aiding decision making regarding different environment and services. 5. Improved communication with council.
24	007	3	√			Endorse having an area to terminus with other electoral boundaries. Create an area with common or similar philosophies of self help and social need. Represent a population whose voice is more likely to be heard at local level. A smaller cohesive group of residents.
32	007	3	√			I support strongly the proposal that Passmore should separate from the existing parish and we, together with Woughton on The Green and Woughton Park, should form a new parish. The existing Woughton Parish Council is too big. The parish consists of a collection of estates which are diverse in outlook, in background and resources. It has a numerically large parish council on which Passmore is not represented. The parish council consistently increase its staffing levels and requests to the chairman to reduce this overhead go unheeded. The parish rents office accommodation in Netherfield which is extensive and it is extremely costly – paid for by the parish precept. As a result of this proficiency we are charged a parish precept which is the highest in the city. The benefit to Passmore from having to pay the high level of taxation is minimal. This is unreasonable and is an irritant. We in Passmore wish to shake off the clutches of the Woughton Council and have a more direct influence on the charges that we pay for parish council matters and on the events that the parish organises on our behalf.
81	007	3	√			Given that we currently represent a small fragment of a much larger Parish, there is quite clear frustration amongst the residents of these 3 areas that the views of our 2 Parish Councillors are not being heard. The current set-up is far too large. Ideally, we need to create a smaller Parish (as proposed in this campaign). It would allow issues to be resolved more efficiently and effectively. On a social level, this would also create greater cohesion between the residents of the 3 localities, as the Parish would be small enough. People would become more interested in what's happening within their Parish Council.

## Small is Beautiful Campaign - SURVEY COMMENTS - Issued 23 Sept 2010

Serial No:	Code No:	Topic Count	We Support	Have Concerns	No Change	Comments from Residents
158	007	3	√			We were disappointed to hear of the outcome of the meeting of the Parish Review working Group on 17 <sup>th</sup> March. We originally expressed the view that we had no desire to remain as part of the existing Woughton Parish Council arrangements and remain of this view. We believe that the current arrangements do not adequately represent our interests and that we derive very little benefit from the existing Parish Council. We are of the view that a new smaller Parish Council which directly represents the views and aspirations of like minded communities who have the greatest local affinity would be in our best interests. The new Parish Council would provide us with an opportunity to directly influence the decisions which affect our community and to derive the best possible tangible benefits in an efficient and cost effective way. Accordingly, we fully support the proposal to form a new Parish Council comprising the communities of Passmore, Woughton Park and Woughton on the Green.
113	011	3	√			A smaller, more "local" parish council would be better placed to represent the interests of people in this area, and to target resources in a more relevant way.
998	011	3	√			We have already written to the local authority about this and disappointingly they chose to ignore a request to give more "say" to the residents in this area. A smaller more focussed Parish would give the residents far more say about our services and our area than at present which we need.
28	013	3	√			There is no sense of community in the current large parish. As mature parents of a young child we would welcome a small community of like-minded families in which we can become involved, as we share similar needs, ages and backgrounds, which we do not share with the larger parish as a whole. We have similar needs and values with residents of Woughton on The Green and particularly Woughton Park and would welcome stronger ties as part of a smaller neighbourhood community where we can hone services to suit a much smaller demographic.
36	013	3	√			Needs: ongoing focus on upkeep of public areas, walkways etc. to prevent any of these areas falling into decay. Aspirations: encouragement of pride and responsibility amongst its residents. All of the above is much more easily attainable in the smaller proposed parish – returning more to the "village" principle, rather than municipal which can be taken care of at the next tier of local government.
999	014	3	√			To have our voice heard and needs met at a parish council meeting. 2.To provide services at a proportionate cost. 3.To be better democratically positioned at borough level. 4.Emulate our successful neighbouring parish council at Simpson. Currently Passmore is still waiting for number signed for the road, funded by the WPC, to aid emergency services!
33	019	3	√			My reasons for supporting the campaign are: 1. Passmore has nothing in common with most of WCC. 2. As a matter of principle, I think it is wrong that Passmore residents should have to contribute financially to deprived areas than other MK residents. 3. Our new Parish Council would be able to support and represent us much more effectively. 4. I think WCC is too big and too bureaucratic.

## Small is Beautiful Campaign - SURVEY COMMENTS - Issued 23 Sept 2010

Serial No:	Code No:	Topic Count	We Support	Have Concerns	No Change	Comments from Residents
110	019	3	√			A new smaller Parish Council covering just the Passmore, Woughton on The Green and Woughton Park would allow the wishes of the local residents to be considered which as things stand is definitely not the case. A smaller parish Council is the only way forward towards a fair way to properly manage the local council tax ??????? which as I understand it is one of the highest in the whole of MK. Fair representation is a phrase that has been extensively used by ministers of late and that's all we are seeking, no more no less.
70	021	3	√			The current Woughton Community Council covers too large an area to administrate effectively, much of which, we feel to have very little in common. Large sections of WCC have been identified by the Milton Keynes Borough Council to be in deprivation. We feel that this does not apply to us and our neighbours. (We don't feel in any way to be deprived or disadvantaged.) The WCC seem obsessed in taking on the role to spend large sums in the regeneration of these areas of deprivation. This we feel should be the sole responsibility of the MKBC, who have the expertise to facilitate these large budget schemes for the benefit of all the Borough's communities. The proposed new parish comprising Woughton-on-the-Green, Woughton Park & Passmore would be better able to represent and respond to our local needs and aspirations of our joint community. The proposed new parish would have a good mix of residential housing including, council house tenants, shared ownership, buy to let, private rental tenants, and owner/occupiers. Our leaving WCC would still leave them with a similar mix of residential housing.
71	021	3	√			For many years Woughton Parish Council has failed to properly represent the interests of all its residents. The area covered by the council is large and overly composed of some large social housing estates each with its own problems. Throwing large amounts of money at these problems has made no significant difference and no alternative strategies are being considered. Requests for small items to benefit immediate residents are being ignored/promises broken. We need a parish council that will promote the self help ethos engendered on Passmore.
58	028	3	√			We hope to achieve improvements towards: (i) better control over finances (ii) managing our own affairs (iii) protect local interests reduce parish waste! and hopefully taxes.
59	037	3	√			A. We do not consider that Woughton Parish Council can/does take adequate account of the needs and views of Passmore, Woughton on The Green and Woughton Park residents. This is because the other areas that make up the current Parish Council have different priorities and needs. B. A smaller Parish Council which can really represent residents will give us a community identity and encourage participation in local issues.
177	037	3	√			The Parish would be able to focus more on relevant issues/needs of the 3 areas. Budget can be spent on the 3 areas rather than subsidising the rest of the larger parish as we do now. It would be nice to receive a parish news letter to let us know what is going on as we do not always get one at the moment.
89	038	3	√			I expect my Parish Council to allow me to be included in community involvement <u>not</u> excluded. I want a strong Parish Council that reflects a sense of pride and purpose, relevant to my aspirations for the area I live in.

## Small is Beautiful Campaign - SURVEY COMMENTS - Issued 23 Sept 2010

Serial No:	Code No:	Topic Count	We Support	Have Concerns	No Change	Comments from Residents
131	041	3	√			A smaller parish council will enable funding to be more specifically allocated to our needs, eg better maintenance of trees and vegetation, more regular emptying of dog bins, a mobile library coming to the area for older residents, a review of rents/rates to enable a village shop to re-open in Woughton – I am sure the list is endless!
76	044	3	√			Investment in keeping the area “well kept” i.e. the orchard needs pruning regularly, the childrens'parks need to be updated. It would be nice if the pot holes in the roads (local estate roads) were fixed. It would be nice to create a sense of real community through some local events as there is a significant history to this area.
175	044	3	√			The area deserves its own Parish, dedicated to the needs of the local community. There's a good mix of housing by council tax band (roughly 20% are bands A or B), and having personally knocked on the door of band A/B houses, I can confirm that there's support for the campaign across the spectrum. Residents have long been unhappy with Woughton CC, however, WCC has never carried out a survey of views and reported them back to the Parish Boundary Review committee, so that unhappiness has gone unheard. This campaign clearly highlights the desire for local residents to run local services, and ensure the needs of our community are properly serviced.
109	131	3	√			The proposal for a new small PC should allow the locality to focus on the needs of its community rather than have these submerged within the over-sized WPC. The 3 areas have much in common and already share close social ties with the historic Ye Olde Swan and St Mary's Church providing natural meeting points. The fact that Simpson, with only 315 households, flourishes as a PC suggests a new one based on 398 can also be viable and successful. If there is an overwhelming majority in favour of the proposal, MKC should bow to the democratic views of the residents.
19	003	2	√			The current Government was elected on a manifesto of rolling back big government at all levels – central and local – and giving back democracy and decision making to the people. Milton Keynes elected <u>both</u> of its MP's on this manifesto. To move to a small Parish Council is in line with the wishes of government and people. Only in this way will our individual views get taken into account and not become subsumed in the noise of a large and beaurocratic council.
50	003	2	√			I fully support the campaign for a new small Parish Council that brings together Passmore, Woughton on The Green and Woughton Park. I feel that this new, smaller Parish Council would provide a stronger voice for needs of these residents. It is easier for residents to engage more fully within a smaller Parish Council and create a real community. A new parish Council would return democracy to “grass roots” where people can feel that they can make a difference.
101	003	2	√			1. A small council would be more able to cater for the particular needs of that area. 2. Although the area may not be very needy, we would like our views represented. 3. Parish rates should be equalised across the city for similar houses.

## Small is Beautiful Campaign - SURVEY COMMENTS - Issued 23 Sept 2010

Serial No:	Code No:	Topic Count	We Support	Have Concerns	No Change	Comments from Residents
10	005	2	√			As residents of Woughton on the Green we feel that a smaller parish council would serve us better, being more focused on local needs. I would agree that Woughton on the Green, Passmore and Woughton Park would be the obvious choice for the new (smaller) Parish. The existing larger Parish does not appear to adequately deal with our local issues and ideas, probably due to the size and many differing views across this much larger and unwieldy area. A smaller and more local parish council similar to the Parish Council of Simpson would have much more local support and be better able to provide the services that our local community wants. I am sure that people would be much more willing to support and help with projects and ideas if the Parish Council was more localised and focussed on the areas that are local to us.
21	005	2	√			The Parish has grown too large for the Council to address the issues that arise. We consider that by separating Woughton on The Green from the existing Parish, the new PC will be able to give better service to the parishioners.
48	005	2	√			We support this campaign for a small parish which would more readily recognise the need of this locality and provide services accordingly.
62	005	2	√			I feel that a smaller Parish Council would benefit our area. The Parish Council at the moment is too big. I feel we are left out. We don't get any information at what's going on and what's being done. A smaller Parish Council would bring our community together more.
7	006	2	√			Woughton Parish Council in its present state is rather large and divided. There is no feeling of community and there are decisions made without any consultation or information. I feel with a smaller Parish it will bring us together and give residents more influence over decisions affecting our areas.
15	006	2	√			It is our impression that the majority of the residents of Woughton on the Green feel they would be better served by a Parish Council able to concentrate on their preferred interests and the social and physical environment in which they have chosen to live. A glance at the periodic Parish Gazette provides ample illustration that we are on the periphery of the council's concerns. The Chairman's expressed desire for harmony cannot be achieved where a significant number of people feel effectively disenfranchised. He makes public his dogmatic view that social division and enclaves of poverty and wealth would result from separation, but appears unwilling to accept that such an entrenched situation already exists and has been brought about by the failure of earlier administrations to recognise the consequences of disparate development and expansion upon the old previously sparsely populated rural parish of Woughton. Separation would not result in the 'turmoil' he envisages but would, it is hoped, encourage an atmosphere of understanding and mutual respect. It would surely also ease the administrative burden of the existing over-large parish and permit reduction of the heavy staff-related expenses for which we in Woughton on the Green bear a disproportionate share. Concerns were expressed about the naming of the 'new' parish. Since the Parish council has now declared itself a Community Council there would perhaps be no compelling objection to our re-adoption of our original name, the Woughton Parish Council centred on the village and its church.
127	006	2	√			Provided there would be no more cost than what we pay at present.



## Small is Beautiful Campaign - SURVEY COMMENTS - Issued 23 Sept 2010

Serial No:	Code No:	Topic Count	We Support	Have Concerns	No Change	Comments from Residents
166	006	2	√			We feel that we are not getting value for our contribution as we are in a minority yet we contribute the most. We want justice and true democracy. We wish to aspire to ????? of belonging to the community of Passmore, Woughton on the Green and Woughton Park.
172	006	2	√			The requirements of the 3 localities are very different to those of the more densely populated areas of the current "Parish". We have a right to be represented in a way that will reflect our area requirements.
29	009	2	√			Hopefully a better dedicated Parish. Lower rates.
47	009	2	√			We want to see a Parish Council that truly represents our neighbourhoods. We need a direct line of contact with the Milton Keynes Borough Council in respect of: Future developments in our area Changes to any of our public services Local security, noise pollution and traffic flow. Improvements that we may want implemented from time to time.
159	009	2	√			We feel a new small Parish Council will be more representative of our common interests and needs rather than staying a small section at a large group with differing interests.
180	010	2	√			We currently have very little influence under the present parish set up and the majority of effort and resources are focussed on other areas of the parish. In addition the above areas are being unduly penalised financially in order to subsidise the other areas of the parish.
79	017	2	√			I agree with your proposal for a new small parish council. As 2 parish councillors are unable to represent us more fairly with MK Council.
90	017	2	√			I believe that a single Parish Council would better serve the needs of these 3 areas and be fairer. It would also help the 3 areas integrate better.
93	017	2	√			Have discussed (mainly with Kevin Wilson) on a number of occasions the high council tax we pay. Reasons given were: (i) Subsidy for low band tax paid by Netherfield and Tinkers Bridge residents (ii) Number of youth workers etc. in Netherfield higher than other areas in MK (iii) Maintenance of the Woughton Sports Ground (almost never used by Netherfield and TB residents). Where do Marshworth and Peartree Bridge (especially the houses around the Marina) feature? We think your proposal for a small independent parish council is excellent – we hope you succeed.
17	018	2	√			Have lived present address for 21 years and am still waiting to see any benefits in this local area from the present Parish Council. More effort and interest is passed to other parts of the Parish Council area. We have little or no say in the "very local" issues/interests. Your comments that 2 out of 21 gives others an unfair advantage for vested interest is very real. The present Council will fight to retain status quo why? – because they see financial advantage and we are most of the time an acquiescent area. Well, let's show them we know what we want. Independence.

## Small is Beautiful Campaign - SURVEY COMMENTS - Issued 23 Sept 2010

Serial No:	Code No:	Topic Count	We Support	Have Concerns	No Change	Comments from Residents
108	018	2	√			1. A smaller parish council will be more manageable and the views of local residents can be heard and taken into account. 2. Matters needing attention in the new parish will be dealt with instead of being ignored as representation in the current parish council is a small voice. 3. We pay the highest parish council precept in MK and receive no value. 4. We agree that the proposed new parish council is a unit for electoral purposes and that it makes good sense to complete the process by recognising it as a separate council. 6. During the earlier "discussions" we received a missive from the current parish council explaining in the chairman's view why the proposal to form a new parish was wrong. That document was issued as a parish council document using public funds. Our own money was used against us, and the document that was circulated was factually incorrect in some particulars. 7. A resident of Passmore who attended a parish council meeting legitimately was told they had no right to be there, by the chairman, who considered that Passmore was <u>not</u> part of the parish.
31	020	2	√			I feel the present parish arrangement is unfair because the scale of deprivation within its boundaries is so immense that it will always be incapable of funding a viable and effective solution. It's a Borough problem the cost of which is more appropriately, and fairly, funded across the entire Borough. 2. I want the opportunity to share with my local community in nurturing our neighbourhood.
92	020	2	√			A new Parish comprising the three areas above would provide a fairer system for the householders concerned. We would hope for a closer knit community which would benefit the three areas concerned.
72	024	2	√			Any new Parish Council must give value for money and be relative to the needs and requirements of the Parish.
11	034	2	√			I live in Woughton on the Green and would like to see it being prioritised for improvements and residential input. 2 play areas have been installed/renewed and no local opinion has been requested. There is little litter pickers in public areas, i.e. roads need resurfacing. More parking is required. I am clerk to a Bedfordshire Parish and have been disappointed in the amount of public input that has been requested.
5	036	2	√			We support this campaign totally and if we can help in any way let us know. The benefits would be: (i) Improve and develop our community morale – our areas have always been isolated from the rest of Woughton Parish - we have seen very little community spirit from them. (ii) To spend the money raised from the precept on improvements to our community – at the moment all monies raised are spent elsewhere.
82	040	2	√			We would all like a park on our street as there was one before and also like a bin for dog poo on the street.
83	040	2	√			A park + dog bags + poo bin.
134	040	2	√			Sleeping Policemen (Lucas Place). Play areas for the children. As a dog owner, more dog bins are needed in the area. The playing fields at Woughton have been taken over by MK Dons and when functions are happening cars park all over the field causing the ground to be churned up and the noise can cause problems as well as the amount of rubbish left behind afterwards.

## Small is Beautiful Campaign - SURVEY COMMENTS - Issued 23 Sept 2010

Serial No:	Code No:	Topic Count	We Support	Have Concerns	No Change	Comments from Residents
30	132	2	√			Both NNNN and I are fully in support of the proposal to establish a new Parish Council for the three areas mentioned. The important failure the first time round (apart from the appalling meeting at the Council Offices) was the potential split with Woughton Park heading for Simpson. We will only be successful if we are united. Whilst Passmore is the wrong side of the canal and branded, historically, as Tinkers Bridge North, culturally it is very much closer to the proposed new parish and its residents are socially strong and have many links with the Village, the allotments, the Church, the Olde Swan etc. Sad that we do not have a shop/post office. Passmore has its own strength as a "community". The formation of the proposed parish would strengthen the local community focus. The existing civil parish is an impossible community with such diverse social and practical needs that will never come together in the way that a smaller and more compatible grouping could achieve. I had a meeting recently with the CEO of the present Woughton Parish (re Village Half Lease) and during our discussions she explained that if there was a split all the staff and liabilities of the existing unit would remain with Woughton on the Green and a new parish would be formed of the large estates, Netherfield, Coffee Hall etc. This theme was introduced in the letter that Kevin Wilson circulated and the legal validity of this needs a thorough check. For your information the Village Hall (an 1865 Wesleyan Chapel) in Woughton on the Green is owned by the church with the local Church Council the managing and beneficiary Trustees. The hall is currently leased to the Woughton Civil Parish and the 28 year lease terminates this year. The renewal of this lease is currently under review. Clearly whichever way the parish boundary discussion goes will have an impact on this situation. Please note that St Mary's Church has plans to restore the fabric and develop the building to provide better facilities for community use. However, the membership of St Mary's is gathered from all over Milton Keynes with a minority being resident within its local patch, which itself extends beyond the boundaries of the proposed new civil parish and includes Peartree Bridge and Eaglestone. The Minister actually lives in Eaglestone. So there is a certain conflict of interest in that respect although it is important to the St Mary's family to play a positive role as part of the local parish whatever its boundaries are. The church council has been advised of the current initiative re parish boundaries. . .
65	136	2	√			Preservation of the area's green character. Eradication of noise pollution by high speed traffic.
1	001	1	√			We believe the creation of a new small Parish Council on the lines outlined in your letter would best meet our needs and requirements.
16	001	1	√			We originally opted for Woughton Park only to join Simpson Parish, but on reflection, now believe that creating a new parish with Woughton on the Green and Passmore would be a better option. We believe Woughton PC is far too big as it stands now and a smaller parish will be able to serve the residents concerned better, and also as neighbouring Simpson, we would be of a comparable size.
18	001	1	√			We/I totally agree with the sentiments expressed in the letter and find the argument about aligning to various tiers of government very compelling. I also don't understand how the sheer size of the current Woughton parish has come about. Are there any figures showing the relative sizes of all parishes within Milton Keynes? Surely the duty of the committee reviewing boundaries has guidelines aimed at establishing a balance across parishes relative to size.

## Small is Beautiful Campaign - SURVEY COMMENTS - Issued 23 Sept 2010

Serial No:	Code No:	Topic Count	We Support	Have Concerns	No Change	Comments from Residents
34	001	1	√			I fully support item 1 above, and strongly believe in a small separate parish council that will improve the control, costs and decision making in the parish.
44	001	1	√			We are of the opinion that we support a significant number of staff and events that have no value or bearing on our neighbourhood. A small parish and council would be more suited to administer and support the low level of community functions and events desirable. Overblown administration and associated costs are not required for our neighbourhood.
53	001	1	√			Exactly as stated so well in the letter received with this form.
61	001	1	√			All the rationale already outlined on previous page.
86	001	1	√			Fantastic Idea.
112	001	1	√			I do not think the present bloated parish council serves the interests of the residents of the new proposed small parish council.
119	001	1	√			In favour of a smaller parish.
132	001	1	√			Small is beautiful.
151	001	1	√			Small is efficient and beneficial to residents.
152	001	1	√			The proposed small parish council would provide a more relevant and democratic service to the local area.
3	002	1	√			Our area needs democratic representation. Different areas have different priorities
4	002	1	√			Because MK council identify Woughton on the Green and Woughton Park as "Polling District MD"incorporating 3 out of 4 tiers of democratic representation, what reasons do the council have for not extending this to include Parish Council arrangements?
9	002	1	√			We believe the proposal to form a smaller Parish will give the residents of the new Parish a better voice and control over their affairs than obtained at present.
39	002	1	√			Over the past few years there has been much devolving of responsibilities from the unitary authority to parish councils. These duties had previously been the upper tiers responsibility and by passing these down it has reduced the impact of the council tax but dramatically increased the costs of the parish. The size of the precept is not the issue but that it is spent based on what we in the "new parish" need with admin costs under control.
40	002	1	√			To have some say in how the Parish precept is spent and also to be informed about what, if anything, is taking place.

## Small is Beautiful Campaign - SURVEY COMMENTS - Issued 23 Sept 2010

Serial No:	Code No:	Topic Count	We Support	Have Concerns	No Change	Comments from Residents
45	002	1	√			This change is critical as our needs are currently ignored by the present parish council who happily take our money.
63	002	1	√			Parish Councils are elected to give residents a say in running of communities at the most local level. It seems to us that it fails in Woughton Parish Council, not because of size, but due to inhomogeneity. From this follows the different priorities of these three localities and the rest of the parish. Consequently, and often, when the voice of our parish councillors differs from the other we have no say. Your proposal will solve this problem without penalty to the more deprived localities who we generously subsidise through the council tax system.
66	002	1	√			The Simpson Parish Council have already established a precedent as a separate Parish Council of similar size to the proposed P-WP-WOTG area, then that, along with the majority of P-WP-WOTG voting in favour, we can see no reason for refusing this request.
95	002	1	√			Great idea! When can it start! Home rule for Woughton Park homes – at last!
126	002	1	√			I just want to have some control and input on how Passmore is run – apparent we have no control.
150	002	1	√			I agree with the views set out on the previous page we are not currently getting “value for money”. Our needs and requirements are sometimes quite different from most in the Parish than we are currently in.
155	002	1	√			I feel that more of the Woughton on the Green’s residents council tax should actually be used to aid Woughton on the Green.
26	004	1	√			We have a lot in common.
37	004	1	√			All for one and one for all. It would be ideal for us to have our own identity.
80	004	1	√			To maintain the high quality of this local environment and to keep the costs affordable for the residents.
115	004	1	√			Simple efficient boundary change would simplify voting and community spirit.
156	004	1	√			Keep local residents taxes spent on local areas. Reduce spending on unnecessary services such as playground and cutting grass (which encourages poor health like allergies).
22	008	1	√			Conditions of the pavements. Reinstate the skip that used to come every couple of months. Would like mainline gas!
75	008	1	√			The needs of the three areas are similar as there are a minimum number of deprived families. We have no extra requirements to what are already supplied by the Parish and MK Council but hopefully would be paying less in total each year. Would there be any effect on school catchment areas?

## Small is Beautiful Campaign - SURVEY COMMENTS - Issued 23 Sept 2010

Serial No:	Code No:	Topic Count	We Support	Have Concerns	No Change	Comments from Residents
100	008	1	√			According to the tables provided by Mr Humphries' letter, properties in the new parish have a vast majority of them within the higher tax bands and are therefore subsidising other properties. Parishes should consist of like-for-like properties. The present parish is "top heavy" with about 50% of the precept being spent on administration. A cap should be placed on such items.
122	008	1	√			Need control of the nuisance from the Woughton Playing Field events. Playground for children in our locality. Dog Pooh – massive problem playing fields.
141	008	1	√			1. We have more in common with Passmore & Woughton on the Green than any other part of Woughton. 2. A combined parish will not be smaller than Simpson Parish. 3. A larger proportion of our population is retired and so has different needs from Woughton as a whole. 4. We currently appear to be bearing a ratio burden out of proportion to the houses' values and occupants' incomes.
149	008	1	√			Provide cost effective service in line with the locality.
164	008	1	√			The Newport Road needs resurfacing throughout – it is very patched and looks unsightly. The frequency and care with which the grass verges are cut in Woughton Park needs improvement. The verges look like a hay field when cut.
185	008	1	√			Not seen any value from current parish council.
49	016	1	√			I think we need to be seeing better value for money in our area and not having our taxes used to subsidise other areas.
8	032	1	√			1. When we moved to Woughton on the Green in 1987 (23 years ago) the <u>present</u> Parish Council was in place with its existing boundaries. 2. Now in 2010, the number of homes, population, amenities etc. etc. have increased and improved in line with Milton Keynes' aspirations for our new "city". We agree it is time for a <u>new</u> Parish Council and your suggestion of aligning with the Polling District is very logical and sensible. <u>We fully support the campaign</u> . 3. This would fulfill all the residents' ambitions to nurture, enhance and protect the area for the benefit of all.
96	064	1		√		I believe that it's more cost effective for Woughton Park to join with a nearby similar Parish like Simpson in order to avoid the overhead cost associated with creating a new Parish and the requisite infrastructure. I would like to see a Parish that focuses on core essential services at reasonable value for money cost, with non essential services (such as the Carnival and other social events) funded separately on a voluntary basis by those who want and can pay for them, especially during this recessionary period.



## Small is Beautiful Campaign - SURVEY COMMENTS - Issued 23 Sept 2010

Serial No:	Code No:	Topic Count	We Support	Have Concerns	No Change	Comments from Residents
129	064	1	√	√		We support the campaign because we would like Woughton Park to be moved out of Woughton Parish. However, we would have preferred a campaign to merge Woughton Park with Simpson Parish since this was the favoured option voted for by the majority of Woughton Park residents in the MK Council questionnaire earlier this year, and this would have been welcomed by Simpson Parish Council. Our view is that MK Council would be more easily persuaded to agree to this shift rather than the bigger proposal being campaigned for here. If this campaign for a new parish gets turned down by MK Council we would like to see a new campaign for Woughton Park to be merged with Simpson – should Simpson Parish Council still be agreeable to it.
135	064	1		√		I have reservations about your campaign, as I think this area is too small to be independent. Woughton Parish Council have in the past used us to pay for schemes, which should have been funded by the Borough, giving us in relative terms, one of the highest council tax rates in MK. Most of the current Woughton Parish started as rental (may not be now) and we therefore have very little in common with the rest of the area. It would make more sense to me to join another area, e.g. Simpson or Kents Hill. Woughton Parish looks on us as “milch cows”.
160	064	1		√		I am not happy with the idea of forming a new Parish Council for numerous reasons. I previously voted for a merger with Simpson parish, as did much of Woughton Park and I wonder why this proposal has now been ignored. I do not think a new parish is at all likely to be agreed, or to succeed, because of the financial and social implications for both the remainder of WCC and the new parish. I am therefore most reluctant to see the possibility of merging with Simpson brushed aside by this new proposal, which may well prove a non-starter and which I do not favour.
161	064	1		√		We are very concerned with the idea of establishing another parish council for Woughton on the Green, Woughton Park and Passmore. This approach will involve a lot of expense in setting up a new council and then the ongoing administration costs, the only people who will finish up paying for this will be the residents of these areas. In our considered opinion, we feel the only way forward is to either to overturn the recent decision not to move Woughton on the Green, Woughton Park and Passmore to the Simpson Parish Council or to leave the current council boundaries as they are currently.
2	128	1	√			Within the boundaries of these three communities lie some of the most beautiful areas of parkland and canal ways. A small parish that all use this most beautiful amenity is more likely to cherish it and assist the local council and waterways associations to keep it as a beautiful amenity to be enjoyed by all.
98	256	1			√	We have <u>not</u> supported the move to alter the parish boundaries in previous questionnaires. Surely to proceed along the lines in (2) above would incur some considerable expense. Who would be liable for these? No estimates of cost have been produced for your plan, i.e. 1. Obtaining and hiring suitable premises for a Parish Office. 2. Fitting out such an office with the necessary equipment 2. Continuing employment of a Parish Clerk (? full time) 3. Employment of necessary staff. We have to be convinced that any advantage would warrant a change from the situation which has operated successfully for some years.

## Small is Beautiful Campaign - SURVEY COMMENTS - Issued 23 Sept 2010

Serial No:	Code No:	Topic Count	We Support	Have Concerns	No Change	Comments from Residents
99	256	1	√		√	<p>1. We consider that those of us who live in Woughton on the Green, Woughton Park or Passmore should be grateful that we can afford to live in one of the most pleasant areas of Milton Keynes. It is true that we have very low level of needs for support from a Parish Council, but we feel that this idea of cutting ourselves off from those areas of Woughton Parish where the residents have greater needs for support is unpleasantly selfish and "nimbyish". Proceeding with this idea as it currently stands (particularly with the illogical inclusion of Passmore but exclusion of Tinkers Bridge) leaves you and your group of supporters open to the criticism of intending to create a "middle-class ghetto"</p> <p>2.The currently proposed new parish area is illogical in terms of both geography and services. As already mentioned, you are excluding Tinkers Bridge, which contains our nearest shop and Post Office. However, the area includes the Patch allotments, which provide a service for a much wider area.</p> <p>3.We believe, from conversations with some of our neighbours about this issue, that there may well be general misunderstanding of which services are provided by the Parish Council and which by the unitary authority and therefore some of your supporters are making their decisions on an unsound basis. Our neighbours did express dissatisfaction about "Council" services, but this was in terms of the standard of road maintenance (unitary authority responsibility) and playground maintenance (again, unitary authority). Have you clearly explained at any meetings you have held exactly what services you are discussing and who is responsible for them?</p> <p>4.Financially, we suspect that savings on Council Tax would be negligible, given that residents in greater need throughout Milton Keynes have to be supported in some way by the Council, so that we would still be covering part of the cost, but in a different way rather than via our parish precept. It would be necessary to buy in administrative and other services for the new parish from outside. With such a small population, any services that were needed would have a high unit cost and would probably be under-utilised, which is wasteful and costly. Setting up a new parish and disbanding the current one would in itself be extremely time-consuming and costly in terms of bureaucracy. We see no benefit from this proposal; to support it seems to be a note for selfishness and little else.</p>
114	256	1			√	Happy as we are.
144	256	1			√	Not broke. Don't fix it.
165	256	1			√	We are content as we are. Sustainability over the next 10-15 years as potentially our estate changes demographically and potentially more families come in.
169	256	1			√	The current Parish arrangement does not meet needs. However, we question the need for Parish Councils. The MK Unitary Authority is small enough to deliver services at the parish level without the need for a fourth tier of representation. If Parish Councils did not exist in MK it would not be necessary to invent them. So our preferred solution is no Parish Council with resources at the city level thereby increased.